

Datasheet for ABIN2745520  
**anti-CARD11 antibody (N-Term)**[Go to Product page](#)

## 1 Image

## Overview

Quantity:	100 µg
Target:	CARD11
Binding Specificity:	AA 1-221, N-Term
Reactivity:	Human, Mouse
Host:	Rabbit
Clonality:	Polyclonal
Conjugate:	This CARD11 antibody is un-conjugated
Application:	Western Blotting (WB), Immunohistochemistry (IHC), Immunocytochemistry (ICC)

## Product Details

Immunogen:	N-terminal human CARMA1 (aa 1-221 containing the CARD domain).
Specificity:	Recognizes human and mouse CARMA1. Detects a band of ~130Dka by Western blot.
Cross-Reactivity:	Human, Mouse (Murine)

## Target Details

Target:	CARD11
Alternative Name:	CARMA1 ( <a href="#">CARD11 Products</a> )
Background:	CARMA1 is involved in the costimulatory signal essential for T cell receptor (TCR)-mediated T cell activation. Its binding to DPP4 induces T cell proliferation and NF-kappaB activation in a T cell receptor/CD3-dependent manner. CARMA1 activates NF-kappaB via Bcl10 and IKK.

## Target Details

UniProt:	<a href="#">Q9BXL7</a>
Pathways:	<a href="#">TCR Signaling</a> , <a href="#">Fc-epsilon Receptor Signaling Pathway</a> , <a href="#">BCR Signaling</a>

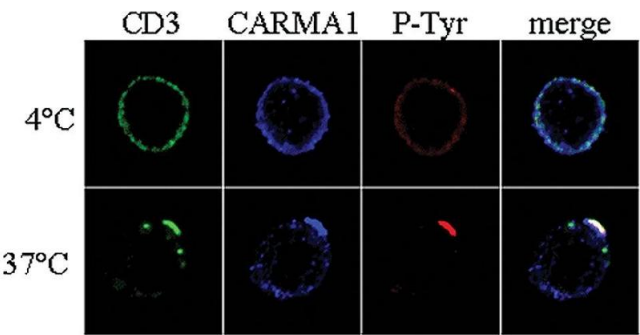
## Application Details

Application Notes:	Optimal working dilution should be determined by the investigator.
Restrictions:	For Research Use only

## Handling

Format:	Liquid
Concentration:	Lot specific
Buffer:	In PBS containing 10 % glycerol and 0.02 % sodium azide.
Preservative:	Sodium azide
Precaution of Use:	This product contains Sodium azide: a POISONOUS AND HAZARDOUS SUBSTANCE which should be handled by trained staff only.
Storage:	4 °C,-20 °C
Storage Comment:	Short Term Storage: +4°C Long Term Storage: -20°C Stable for at least 1 year after receipt when stored at -20°C.
Expiry Date:	12 months

## Images



### Immunohistochemistry

**Image 1.** Immunocytochemistry analysis of CARMA1 using anti-CARMA1, pAb (AL220) . Method: Human T cells (clone 6396p5.1.2) were incubated with anti-CD3, mAb for 20 min. on ice, followed by incubation with secondary goat anti-mouse for 15 min. at 4°C or 37°C. Cells were stained for CD3 (green), phosphotyrosine (red) and CARMA1 (1:200 dilution; blue) and analyzed by confocal microscopy.