

Datasheet for ABIN2745545  
**anti-LYVE1 antibody (AA 24-228)**

## 3 Images

[Go to Product page](#)

## Overview

Quantity:	50 µg
Target:	LYVE1
Binding Specificity:	AA 24-228
Reactivity:	Mouse, Rat
Host:	Rabbit
Clonality:	Polyclonal
Application:	Western Blotting (WB), ELISA, Immunohistochemistry (IHC), Flow Cytometry (FACS)

## Product Details

Immunogen:	Recombinant mouse soluble LYVE-1 (aa24-228).
Specificity:	Recognizes mouse and rat LYVE-1.
Cross-Reactivity:	Mouse (Murine), Rat (Rattus)
Purification:	Antigen affinity purified.

## Target Details

Target:	LYVE1
Alternative Name:	Lyve1 ( <a href="#">LYVE1 Products</a> )
Background:	LYVE-1 has been identified as a major receptor for HA (extracellular matrix glycosaminoglycan hyaluronan) on the lymph vessel wall. Like CD44, the LYVE-1 Molecule binds both soluble and immobilized HA. However, unlike CD44, the LYVE-1 Molecule co-localizes with HA on the luminal face of the lymph vessel wall and is completely absent from blood vessels. Hence,

## Target Details

LYVE-1 is the first lymph-specific HA receptor to be characterized and is a uniquely powerful marker for lymph vessels themselves.

UniProt: [Q8BHC0](#)

Pathways: [Glycosaminoglycan Metabolic Process](#)

## Application Details

Application Notes: Optimal working dilution should be determined by the investigator.

Restrictions: For Research Use only

## Handling

Format: Lyophilized

Reconstitution: Centrifuge vial prior to opening. Reconstitute with sterile water to a concentration of 0.1-1.0 mg/mL.

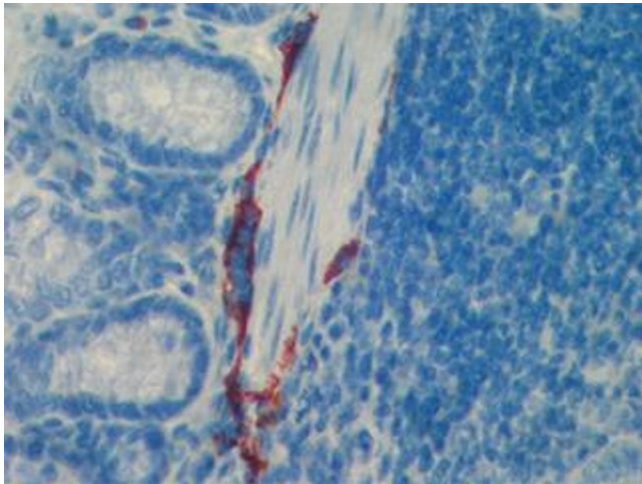
Concentration: Lot specific

Buffer: Lyophilized.

Storage: 4 °C,-20 °C

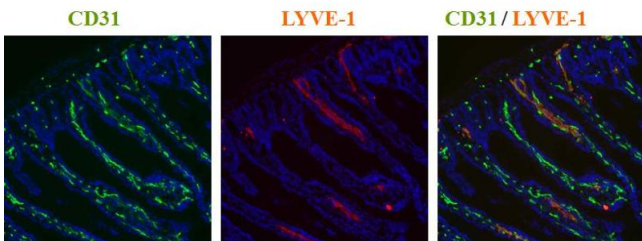
Storage Comment: Short Term Storage: +4°C  
Long Term Storage: -20°C  
Stable for at least 6 months after receipt when stored at -20°C.

Expiry Date: 6 months



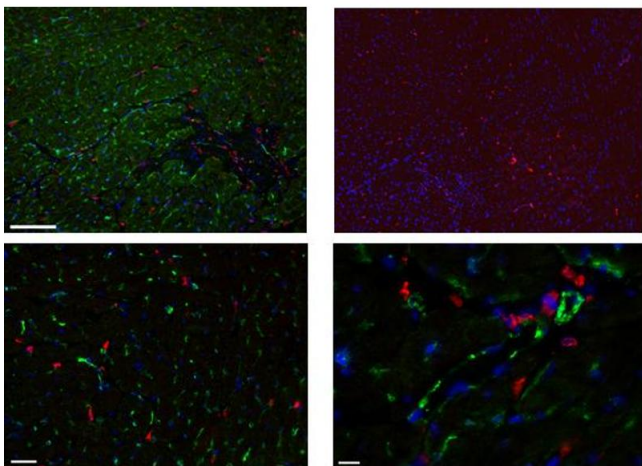
#### Immunohistochemistry

**Image 1.** Immunohistochemistry detection of endogenous LYVE-1 in paraffin-embedded sections of mouse intestine using anti-LYVE-1, pAb (red staining of lymphatic endothelial intestine cells).



#### Immunohistochemistry

**Image 2.** Immunohistochemistry detection of endogenous LYVE-1 in cryo sections of mouse colon carcinoma using anti-LYVE-1, pAb (red) and anti-mouse CD31 pAb (green).



#### Immunohistochemistry

**Image 3.** Immunofluorescence detection of endogenous LYVE-1 on rat microvessels using anti-LYVE-1, pAb (revealed in red) and nuclear stain in blue (right image). Images were obtained at 10x magnification on a Zeiss fluorescence microscope. Scale bar = 100  $\mu$ m (upper lane); 20x and 40x magnification, Scale bar = 50  $\mu$ m (lower lanel).