

Datasheet for ABIN2745651

DLL1 Protein (AA 1-545, Extracellular Domain) (Fc Tag)[Go to Product page](#)**1** Image

Overview

Quantity:	50 µg
Target:	DLL1
Protein Characteristics:	Extracellular Domain, AA 1-545
Origin:	Human
Source:	CHO Cells
Protein Type:	Recombinant
Biological Activity:	Active
Purification tag / Conjugate:	This DLL1 protein is labelled with Fc Tag.
Application:	SDS-PAGE (SDS)

Product Details

Specificity:	Interacts with human Notch1 (as confirmed by flow cytometry).
Cross-Reactivity:	Human
Characteristics:	Signal peptide and extracellular domain of human DLL1 (aa 1-545) are fused at the C-terminus to the Fc portion of human IgG1.
Purity:	>90 % (SDS-PAGE)
Endotoxin Level:	<0.01EU/µg purified protein (LAL test, Lonza).

Target Details

Target:	DLL1
---------	------

Target Details

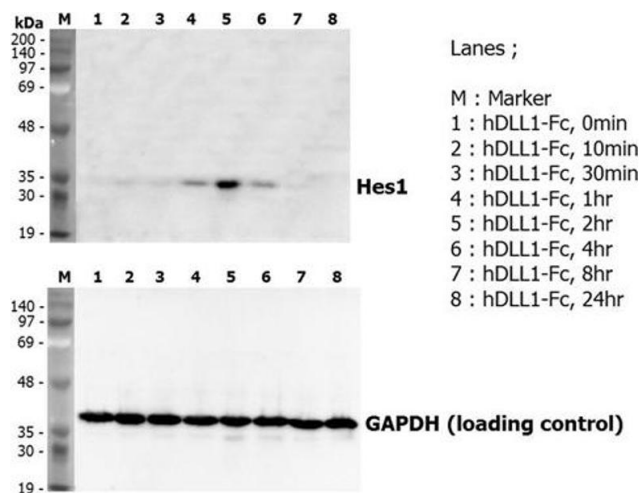
Alternative Name:	DLL1 (DLL1 Products)
Background:	DLL1 (Delta-like protein, Delta1) is essential for postnatal arteriogenesis and contributes to tumor progression. DLL1 is involved in differentiation and self-renewal of adipocyte stem cells. Blocks the differentiation of progenitor cells into the B cell lineage while promoting the emergence of a population of cells with the characteristics of a T cell/NK-cell precursor.
Molecular Weight:	~100kDa (SDS-PAGE)
UniProt:	O00548
Pathways:	Notch Signaling , Stem Cell Maintenance

Application Details

Application Notes:	Optimal working dilution should be determined by the investigator.
Comment:	Inhibits adipogenesis of 3T3L-1 cells. Induces the Notch target gene HES-1 when coated on a plate at 1 µg/ml.
Restrictions:	For Research Use only

Handling

Format:	Lyophilized
Reconstitution:	Reconstitute in distilled water.
Concentration:	Lot specific
Buffer:	Lyophilized. Contains PBS.
Storage:	4 °C,-20 °C
Storage Comment:	Short Term Storage: +4°C Long Term Storage: -20°C Working aliquots are stable for up to 3 months when stored at -20°C.



Western Blotting

Image 1. Induction of Hes-1 with the treatment of recombinant human DLL1-Fc . A mouse preadipocyte cell line, 3T3L1, was stimulated with 5ug/ml of human DLL1-Fc as in indicated time points and each cell lysate was prepared and subjected to western blot by using anti-mouse Hes1 or GAPDH.