

Datasheet for ABIN2747988

CXCL13 ELISA Kit[Go to Product page](#)**1** Image

Overview

Quantity:	96 tests
Target:	CXCL13
Reactivity:	Human, Rhesus Monkey
Method Type:	Sandwich ELISA
Detection Range:	12-3000 pg/mL
Minimum Detection Limit:	12 pg/mL
Application:	ELISA

Product Details

Purpose:	Rhesus Monkey BLC (CXCL13) ELISA Kit for cell culture supernatants, plasma, and serum samples.
Sample Type:	Plasma, Cell Culture Supernatant, Serum
Analytical Method:	Quantitative
Detection Method:	Colorimetric
Specificity:	This ELISA antibody pair detects Rhesus Monkey and Human BLC. Other species not determined.
Sensitivity:	12 pg/mL
Characteristics:	<ul style="list-style-type: none">• Strip plates and additional reagents allow for use in multiple experiments• Quantitative protein detection• Establishes normal range• The best products for confirmation of antibody array data

Product Details

Components:	<ul style="list-style-type: none">• Pre-Coated 96-well Strip Microplate• Wash Buffer• Stop Solution• Assay Diluent(s)• Lyophilized Standard• Biotinylated Detection Antibody• Streptavidin-Conjugated HRP• TMB One-Step Substrate
-------------	--

Material not included:	<ul style="list-style-type: none">• Distilled or deionized water• Precision pipettes to deliver 2 µL to 1 µL volumes• Adjustable 1-25 µL pipettes for reagent preparation• 100 µL and 1 liter graduated cylinders• Tubes to prepare standard and sample dilutions• Absorbent paper• Microplate reader capable of measuring absorbance at 450nm• Log-log graph paper or computer and software for ELISA data analysis
------------------------	---

Target Details

Target:	CXCL13
Alternative Name:	BLC (CXCL13 Products)
Background:	Tyrosine-protein kinase Blk
UniProt:	H9ZC88

Application Details

Application Notes:	Recommended Dilution for serum and plasma samples2 fold
Sample Volume:	100 µL
Plate:	Pre-coated
Protocol:	<ol style="list-style-type: none">1. Prepare all reagents, samples and standards as instructed in the manual.2. Add 100 µL of standard or sample to each well.3. Incubate 2.5 h at RT or O/N at 4 °C.4. Add 100 µL of prepared biotin antibody to each well.5. Incubate 1 h at RT.6. Add 100 µL of prepared Streptavidin solution to each well.7. Incubate 45 min at RT.8. Add 100 µL of TMB One-Step Substrate Reagent to each well.9. Incubate 30 min at RT.

Application Details

- 10. Add 50 µL of Stop Solution to each well.
- 11. Read at 450 nm immediately.

Assay Procedure: Prepare all reagents, samples and standards as instructed in the manual. Add 100 µL of standard or sample to each well. Incubate 2.5 h at RT or O/N at 4 °C. Add 100 µL of prepared biotin antibody to each well. Incubate 1 h at RT. Add 100 µL of prepared Streptavidin solution to each well. Incubate 45 min at RT. Add 100 µL of TMB One-Step Substrate Reagent to each well. Incubate 30 min at RT. Add 50 µL of Stop Solution to each well. Read at 450 nm immediately.

Restrictions: For Research Use only

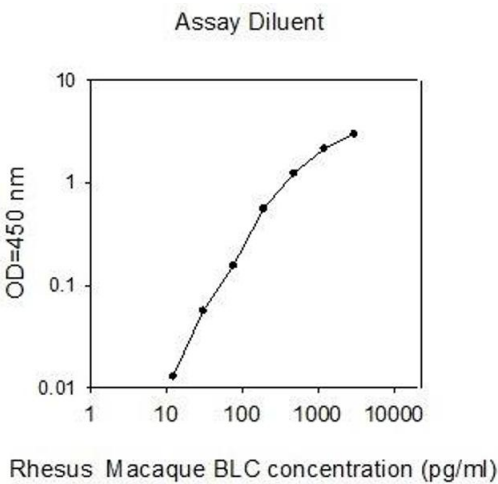
Handling

Storage: -20 °C

Storage Comment: The entire kit may be stored at -20°C for up to 1 year from the date of shipment. Avoid repeated freeze-thaw cycles. The kit may be stored at 4°C for up to 6 months. For extended storage, it is recommended to store at -80°C.

Expiry Date: 6 months

Images



ELISA

Image 1.