

Datasheet for ABIN2748003

Cathepsin S ELISA Kit**1** Image[Go to Product page](#)

Overview

Quantity:	96 tests
Target:	Cathepsin S (CTSS)
Reactivity:	Rhesus Monkey
Method Type:	Sandwich ELISA
Detection Range:	28-7.000 pg/mL
Minimum Detection Limit:	28 pg/mL
Application:	ELISA

Product Details

Purpose:	Rhesus Monkey Cathepsin S ELISA Kit for Cell Culture Supernatants, Plasma, and Serum samples.
Sample Type:	Plasma, Cell Culture Supernatant, Serum
Analytical Method:	Quantitative
Detection Method:	Colorimetric
Specificity:	The antibody pair provided in this kit recognizes Rhesus Macaque Cathepsin S (CTSS)
Characteristics:	<ul style="list-style-type: none">• Strip plates and additional reagents allow for use in multiple experiments• Quantitative protein detection• Establishes normal range• The best products for confirmation of antibody array data
Components:	<ul style="list-style-type: none">• Pre-Coated 96-well Strip Microplate• Wash Buffer

Product Details

- Stop Solution
- Assay Diluent(s)
- Lyophilized Standard
- Biotinylated Detection Antibody
- Streptavidin-Conjugated HRP
- TMB One-Step Substrate

Material not included:

- Distilled or deionized water
- Precision pipettes to deliver 2 µL to 1 µL volumes
- Adjustable 1-25 µL pipettes for reagent preparation
- 100 µL and 1 liter graduated cylinders
- Tubes to prepare standard and sample dilutions
- Absorbent paper
- Microplate reader capable of measuring absorbance at 450nm
- Log-log graph paper or computer and software for ELISA data analysis

Target Details

Target: Cathepsin S (CTSS)

Alternative Name: Cathepsin S ([CTSS Products](#))

Background: Cathepsin S (CTSS)

UniProt: [G7MDI2](#)

Pathways: [Activation of Innate immune Response](#), [Toll-Like Receptors Cascades](#)

Application Details

Application Notes: Recommended Dilution for serum and plasma samples 3 fold

Sample Volume: 100 µL

Plate: Pre-coated

Protocol:

1. Prepare all reagents, samples and standards as instructed in the manual.
2. Add 100 µL of standard or sample to each well.
3. Incubate 2.5 h at RT or O/N at 4 °C.
4. Add 100 µL of prepared biotin antibody to each well.
5. Incubate 1 h at RT.
6. Add 100 µL of prepared Streptavidin solution to each well.
7. Incubate 45 min at RT.
8. Add 100 µL of TMB One-Step Substrate Reagent to each well.
9. Incubate 30 min at RT.

Application Details

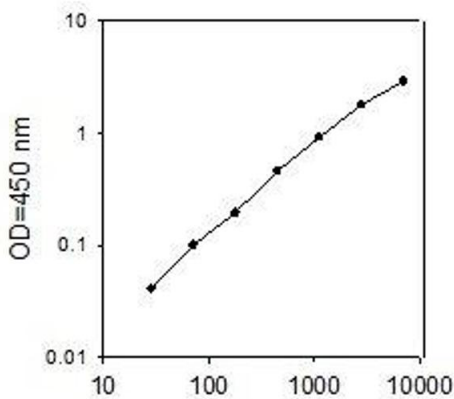
- 10. Add 50 µL of Stop Solution to each well.
- 11. Read at 450 nm immediately.

Assay Procedure:	Prepare all reagents, samples and standards as instructed in the manual.Add 100 µL of standard or sample to each well.Incubate 2.5 h at RT or O/N at 4 °C.Add 100 µL of prepared biotin antibody to each well.Incubate 1 h at RT.Add 100 µL of prepared Streptavidin solution to each well.Incubate 45 min at RT.Add 100 µL of TMB One-Step Substrate Reagent to each well.Incubate 30 min at RT.Add 50 µL of Stop Solution to each well.Read at 450 nm immediately.
Restrictions:	For Research Use only

Handling

Storage:	-20 °C
Storage Comment:	The entire kit may be stored at -20°C for up to 1 year from the date of shipment. Avoid repeated freeze-thaw cycles. The kit may be stored at 4°C for up to 6 months. For extended storage, it is recommended to store at -80°C.
Expiry Date:	6 months

Images



ELISA

Image 1.