

Datasheet for ABIN2749031
anti-L-Selectin antibody**2** Images**6** Publications[Go to Product page](#)

Overview

Quantity:	0.1 mg
Target:	L-Selectin (SELL)
Reactivity:	Human
Host:	Mouse
Clonality:	Monoclonal
Conjugate:	This L-Selectin antibody is un-conjugated
Application:	Flow Cytometry (FACS), Western Blotting (WB), Immunoprecipitation (IP), Immunohistochemistry (Frozen Sections) (IHC (fro)), Functional Studies (Func)

Product Details

Immunogen:	PMA-activated human peripheral blood leukocytes
Clone:	DREG56
Isotype:	IgG1
Specificity:	The mouse monoclonal antibody DREG56 recognizes an extracellular epitope of CD62L / L-selectin, a 65-76 kDa cell surface protein, expressed by neutrophils, monocytes, and subsets of T, B, and NK cells, that interacts with specific carbohydrates exposed on activated endothelial cells.
Cross-Reactivity (Details):	Human
Purification:	Purified by protein-A affinity chromatography.
Purity:	> 95 % (by SDS-PAGE)

Product Details

Endotoxin Level: Endotoxin level is less than 0.01 EU/μg of the protein, as determined by the LAL test.

Target Details

Target:	L-Selectin (SELL)
Alternative Name:	CD62L (SELL Products)
Background:	Selectin L,CD62L (L-selectin) is an adhesion glycoprotein that is constitutively expressed on the cell surface of leukocytes and mediates their homing to inflammatory sites and peripheral lymph nodes by enabling rolling along the venular wall. CD62L is also involved in activation-induced neutrophil aggregation. Activation-dependent CD62L shedding, however, counteracts neutrophil rolling. CD62L has also signaling roles including enhance of chemokine receptor expression. Similarly to CD62P, the major ligand of CD62L is PSGL-1 (P-selectin glycoprotein ligand-1),L-selectin, LSEL, SELL, LAM-1, LECAM1, LEU8, LNHR, LYAM1, PLNHR
Gene ID:	6402
UniProt:	P14151

Application Details

Application Notes:	Functional application: Particularly effective in blocking of lymphocyte CD62L-mediated binding to peripheral lymph node HEV. Flow cytometry: Recommended dilution: 2 μg/mL. Western blotting: Non-reducing conditions.
Restrictions:	For Research Use only

Handling

Concentration:	1 mg/mL
Buffer:	Phosphate buffered saline (PBS), pH 7.4
Preservative:	Azide free
Storage:	4 °C
Storage Comment:	Store at 2-8°C. Do not freeze.

Publications

Product cited in: Tu, Mao, Zheng, Liu, Chiu, Qin, Chan, Lam, Guan, Zhang, Guan, Yuen, Peiris, Lau: "Cytotoxic T

lymphocytes established by seasonal human influenza cross-react against 2009 pandemic H1N1 influenza virus." in: **Journal of virology**, Vol. 84, Issue 13, pp. 6527-35, (2010) ([PubMed](#)).

Killock, Parsons, Zarrouk, Ameer-Beg, Ridley, Haskard, Zvelebil, Ivetic: "In Vitro and in Vivo Characterization of Molecular Interactions between Calmodulin, Ezrin/Radixin/Moesin, and L-selectin." in: **The Journal of biological chemistry**, Vol. 284, Issue 13, pp. 8833-45, (2009) ([PubMed](#)).

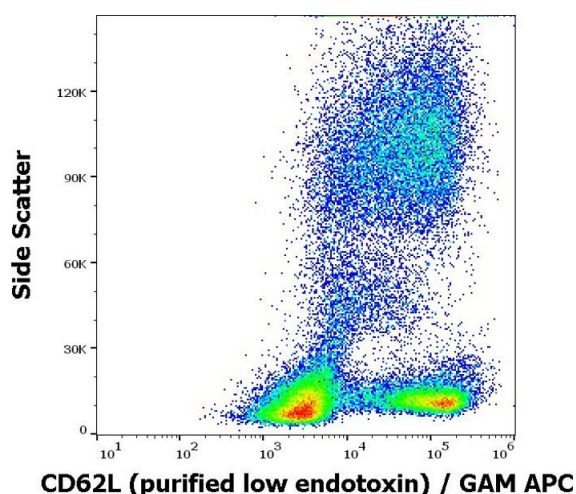
Xu, Chen, Shang, Cui, Luo, Chen, Ba, Zeng: "Critical role of Lck in L-selectin signaling induced by sulfatides engagement." in: **Journal of leukocyte biology**, Vol. 84, Issue 4, pp. 1192-201, (2008) ([PubMed](#)).

Jutila, Kurk, Jackiw, Knibbs, Stoolman: "L-selectin serves as an E-selectin ligand on cultured human T lymphoblasts." in: **Journal of immunology (Baltimore, Md. : 1950)**, Vol. 169, Issue 4, pp. 1768-73, (2002) ([PubMed](#)).

Kishimoto, Warnock, Jutila, Butcher, Lane, Anderson, Smith: "Antibodies against human neutrophil LECAM-1 (LAM-1/Leu-8/DREG-56 antigen) and endothelial cell ELAM-1 inhibit a common CD18-independent adhesion pathway in vitro." in: **Blood**, Vol. 78, Issue 3, pp. 805-11, (1991) ([PubMed](#)).

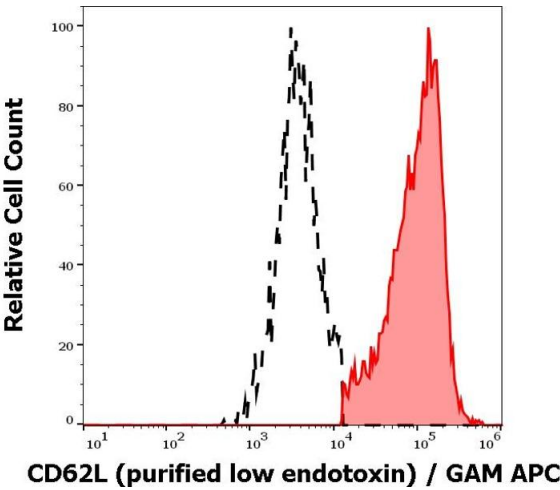
There are more publications referencing this product on: [Product page](#)

Images



Flow Cytometry

Image 1. Flow cytometry surface staining pattern of human peripheral blood stained using anti-human CD62L (DREG56) purified antibody (low endotoxin, concentration in sample 1 µg/mL) GAM APC.



Flow Cytometry

Image 2. Separation of human CD62L positive lymphocytes (red-filled) from CD62L negative lymphocytes (black-dashed) in flow cytometry analysis (surface staining) of human peripheral whole blood stained using anti-human CD62L (DREG56) purified antibody (low endotoxin, concentration in sample 1 µg/mL) GAM APC.