

Datasheet for ABIN2749045

anti-BST1 antibody**1** Image[Go to Product page](#)

Overview

Quantity:	0.1 mg
Target:	BST1
Reactivity:	Human, Non-Human Primate
Host:	Mouse
Clonality:	Monoclonal
Conjugate:	This BST1 antibody is un-conjugated
Application:	Western Blotting (WB), Flow Cytometry (FACS), Immunoprecipitation (IP), Immunohistochemistry (Frozen Sections) (IHC (fro))

Product Details

Immunogen:	Human CD157
Clone:	SY11B5
Isotype:	IgG1 kappa
Specificity:	The mouse monoclonal antibody SY11B5 recognizes CD157, an approximately 45 kDa GPI-anchored extracellular protein expressed mainly on monocytes, macrophages, granulocytes and bone marrow stromal cells.
Cross-Reactivity (Details):	Human, Non-Human Primates
Purification:	Purified by protein-A affinity chromatography.
Purity:	> 95 % (by SDS-PAGE)

Target Details

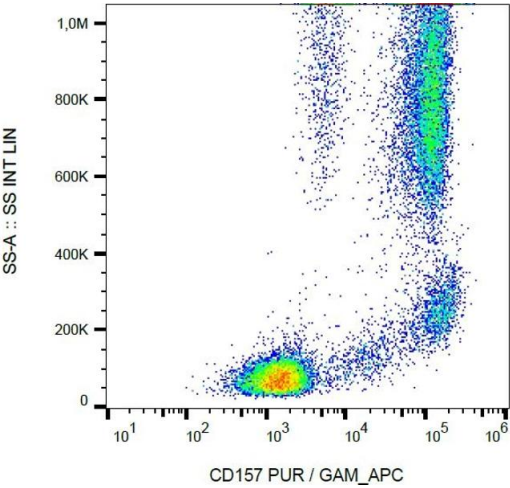
Target:	BST1
Alternative Name:	CD157 (BST1 Products)
Background:	Bone marrow stromal cell antigen 1,CD157 (cADPr hydrolase 2) is a GPI-anchored ectoenzyme possessing ADP-ribosyl cyclase and cyclic ADP-ribose hydrolase activity. It uses NAD and cADP-ribose as substrates. CD157 is expressed on granulocytes, monocytes, macrophages, follicular dendritic cells, bone marrow stromal cells and human umbilical cord vein endothelial cells. In case of rheumatoid arthritis is expression is often higher and it is also differentially expressed in the myeloid leukemias. It may also have a signaling role.,BST1, cADPr hydrolase 2
Gene ID:	683
UniProt:	Q10588

Application Details

Application Notes:	Western blotting: Non-reducing conditions. Immunohistochemistry: Recommended dilution: 5-10 µg/mL. Flow cytometry: Recommended dilution: 1-12 µg/mL
Restrictions:	For Research Use only

Handling

Concentration:	1 mg/mL
Buffer:	Phosphate buffered saline (PBS), pH 7.4, 15 mM sodium azide
Preservative:	Sodium azide
Precaution of Use:	This product contains Sodium azide: a POISONOUS AND HAZARDOUS SUBSTANCE which should be handled by trained staff only.
Storage:	4 °C
Storage Comment:	Store at 2-8°C. Do not freeze.



Flow Cytometry

Image 1. Flow cytometry analysis (surface staining) of human peripheral blood leukocytes with anti-human CD157 (SY11B5) purified / GAM-APC.