



[Go to Product page](#)

Datasheet for ABIN2749048

anti-Sialoadhesin/CD169 antibody

2 Images

Overview

Quantity:	0.1 mg
Target:	Sialoadhesin/CD169 (SIGLEC1)
Reactivity:	Human
Host:	Mouse
Clonality:	Monoclonal
Conjugate:	This Sialoadhesin/CD169 antibody is un-conjugated
Application:	Flow Cytometry (FACS), Western Blotting (WB), Immunoprecipitation (IP), Immunohistochemistry (Frozen Sections) (IHC (fro))

Product Details

Immunogen:	human rhinovirus 14-infected monocyte-derived dendritic cells
Clone:	7-239
Isotype:	IgG1
Specificity:	The mouse monoclonal antibody 7-239 recognizes an extracellular epitope of CD169 (sialoadhesin, Siglec-1), a 210 kDa type I transmembrane glycoprotein expressed on macrophages and dendritic cells.
Cross-Reactivity (Details):	Human
Purification:	Purified by protein-A affinity chromatography.
Purity:	> 95 % (by SDS-PAGE)

Target Details

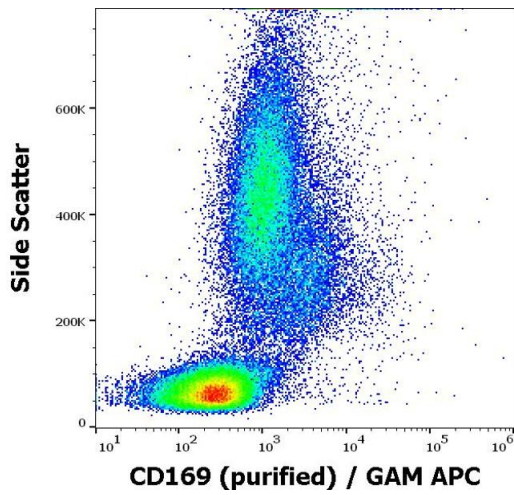
Target:	Sialoadhesin/CD169 (SIGLEC1)
Alternative Name:	CD169 / Siglec-1 (SIGLEC1 Products)
Background:	Sialic acid binding Ig like lectin 1,CD169, also known as Siglec-1 or sialoadhesin, is a type I transmembrane glycoprotein of the sialic acid binding Ig-like lectin family. It binds to sialylated glycoproteins on various haematopoietic cells to mediate cell-cell interactions. CD169 is expressed on a subset of macrophages and dendritic cells. On CD14+ monocytes its expression can be induced by interferon alpha and gamma. High expression of CD169 is observed in the spleen, lymph nodes, bone marrow, and under inflammatory conditions rheumatoid arthritis and atherosclerosis, lower in the liver, lungs and gut. It has been shown to be involved in antigen presentation to invariant NKT cells, which play an important role in the innate arm of the immune system to modulate the subsequent acquired immune responses.,SIGLEC1, SN, sialoadhesin
Gene ID:	6614
UniProt:	Q9BZZ2

Application Details

Application Notes:	Flow cytometry: Recommended dilution: 1-4 µg/mL
Restrictions:	For Research Use only

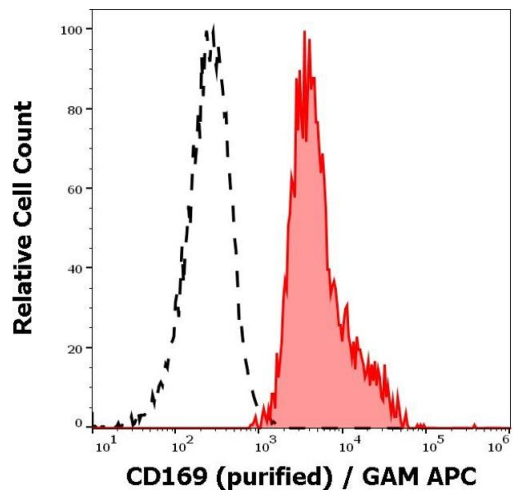
Handling

Concentration:	1 mg/mL
Buffer:	Phosphate buffered saline (PBS), pH 7.4, 15 mM sodium azide
Preservative:	Sodium azide
Precaution of Use:	This product contains Sodium azide: a POISONOUS AND HAZARDOUS SUBSTANCE which should be handled by trained staff only.
Storage:	4 °C
Storage Comment:	Store at 2-8°C. Do not freeze.



Flow Cytometry

Image 1. Flow cytometry surface staining pattern of human peripheral whole blood stained using anti-human CD169 (7-239) purified antibody (concentration in sample 1 µg/mL, GAM APC).



Flow Cytometry

Image 2. Separation of human monocytes (red-filled) from CD169 negative lymphocytes (black-dashed) in flow cytometry analysis (surface staining) of human peripheral whole blood using anti-human CD169 (7-239) purified antibody (concentration in sample 1 µg/mL, GAM APC).