

Datasheet for ABIN2749078
anti-CLIC5 antibody (AA 160-173)

2 Images

[Go to Product page](#)

Overview

Quantity:	0.1 mg
Target:	CLIC5
Binding Specificity:	AA 160-173
Reactivity:	Human
Host:	Mouse
Clonality:	Monoclonal
Conjugate:	This CLIC5 antibody is un-conjugated
Application:	Western Blotting (WB), Flow Cytometry (FACS)

Product Details

Immunogen:	KLH-conjugated peptide corresponding to the amino acids 160-173 of human CLIC5a (Cys-Ile-Asp-Ala-Asn-Thr-Ser-Asp-Lys-Gly-Ser-Arg-Arg coupled with KLH).
Clone:	CLIC5-02
Isotype:	IgG2b kappa
Specificity:	Mouse monoclonal antibody CLIC5-02 recognizes CLIC5a, a 32 kDa intracellular protein which associates with proteins of actin complexes. Crossreactivity with CLIC5b was not determined.
Cross-Reactivity (Details):	Human
Purification:	Purified by protein-A affinity chromatography.
Purity:	> 95 % (by SDS-PAGE)

Target Details

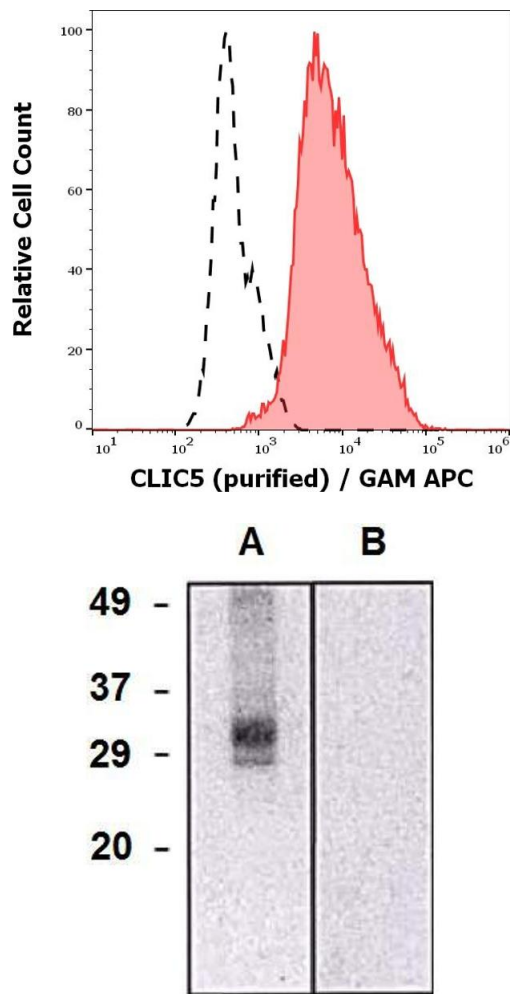
Target:	CLIC5
Alternative Name:	CLIC5a (CLIC5 Products)
Background:	Chloride intracellular channel 5,CLIC5a belongs to the family of chloride intracellular channel (CLIC) proteins, all sharing a highly conserved C terminus and variable N terminus. Human CLIC5 is transcribed in two isoforms, 32 kDa CLIC5a (251 amino acids) and 49 kDa CLIC5b (410 amino acids). These proteins exist in a soluble form and their function as ion channels in vitro has not been fully confirmed in vivo. CLIC5a is a component of complexes of actin, ezrin, and several other actin-associated proteins and is important for functionality of actin-based structures.,MST130, DFNB102, DFNB103, MSTP130
Gene ID:	53405
UniProt:	Q9NZA1
Pathways:	Sensory Perception of Sound

Application Details

Application Notes:	Flow cytometry: Recommended dilution: 1-4 µg/mL. Intracellular staining.
Restrictions:	For Research Use only

Handling

Concentration:	1 mg/mL
Buffer:	Phosphate buffered saline (PBS), pH 7.4, 15 mM sodium azide
Preservative:	Sodium azide
Precaution of Use:	This product contains Sodium azide: a POISONOUS AND HAZARDOUS SUBSTANCE which should be handled by trained staff only.
Storage:	4 °C
Storage Comment:	Store at 2-8°C. Do not freeze.



Flow Cytometry

Image 1. Separation of NALM-6 cells stained using anti-CLIC5 (CLIC5-02) purified antibody (concentration in sample 5 µg/mL, GAM APC, red-filled) from NALM-6 cells unstained by primary antibody (GAM APC, black-dashed) in flow cytometry analysis (intracellular staining).

Western Blotting

Image 2. Western blotting analysis of CLIC5a in HEK293-CLIC5a transfectants (A) and