

Datasheet for ABIN2749098
anti-ARHGEF4 antibody (AA 143-271) (PE)

2 Images

[Go to Product page](#)

Overview

Quantity:	0.1 mg
Target:	ARHGEF4
Binding Specificity:	AA 143-271
Reactivity:	Human
Host:	Mouse
Clonality:	Monoclonal
Conjugate:	This ARHGEF4 antibody is conjugated to PE
Application:	Flow Cytometry (FACS)

Product Details

Immunogen:	Recombinant fragment of human ARHGEF4 (amino acids 143-271)
Clone:	ARHGEF-08
Isotype:	IgG1
Specificity:	The mouse monoclonal antibody ARHGEF-08 recognizes human intracellular protein ARHGEF4 / ASEF1, approx. 80 kDa guanine nucleotide exchange factor specific for Rac1 and Cdc42. The epitope is located in the rough at the region of SH3 domain.
Cross-Reactivity (Details):	Human
Purification:	Purified antibody is conjugated with R-phycoerythrin (PE) under optimum conditions. Unconjugated antibody and free fluorochrome are removed by size-exclusion chromatography.

Target Details

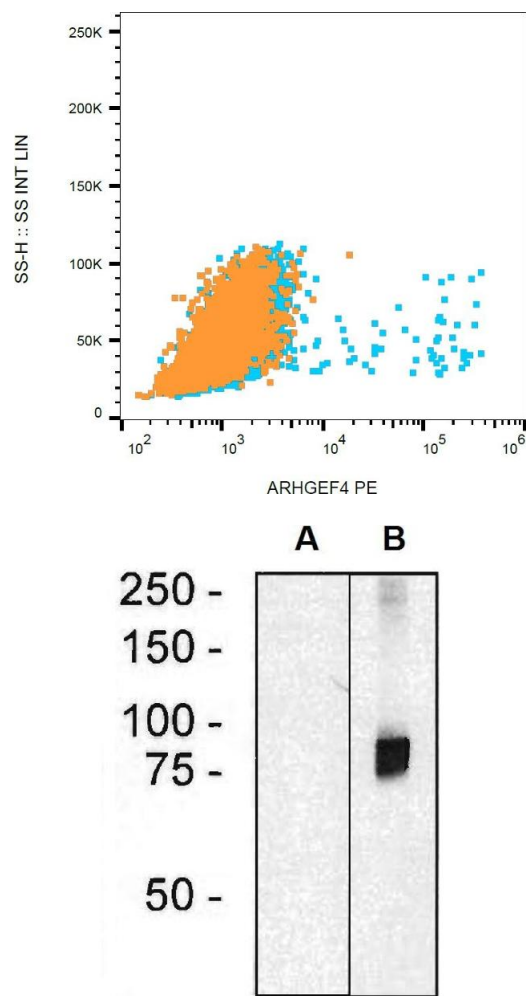
Target:	ARHGEF4
Alternative Name:	ARHGEF4 (ARHGEF4 Products)
Background:	Rho guanine nucleotide exchange factor 4, ARHGEF4 (Rho guanine nucleotide exchange factor 4), also known as ASEF 1 (adenomatous polyposis coli -, stimulated guanine nucleotide exchange factor 1) is an approximately 80 kDa cytoplasmic protein important for growth factor-mediated regulation of cell morphology and migration. Besides N-terminal adenomatous polyposis coli (APC)-binding region (ABR) it contains Dbl homology (DH), pleckstrin homology (PH) and SH3 domains. The SH3 domain inhibits GEF activity of ARHGEF4 by intramolecular interaction with the DH domain, whereas binding of APC stimulates the GEF activity. Activated ARHGEF4 stimulates the small GTPase Cdc42, which leads to decreased cell-cell adherence and enhanced cell migration., ASEF1, GEF4, STM6
Gene ID:	50649
UniProt:	Q9NR80
Pathways:	Neurotrophin Signaling Pathway

Application Details

Application Notes:	Flow cytometry: Recommended dilution: 1-5 µg/mL. Intracellular staining.
Comment:	The purified antibody is conjugated with R-Phycoerythrin (PE) under optimum conditions. The conjugate was purified by size-exclusion chromatography.
Restrictions:	For Research Use only

Handling

Concentration:	0.1 mg/mL
Buffer:	Stabilizing phosphate buffered saline (PBS), pH 7.4, 15 mM sodium azide
Preservative:	Sodium azide
Precaution of Use:	This product contains Sodium azide: a POISONOUS AND HAZARDOUS SUBSTANCE which should be handled by trained staff only.
Storage:	4 °C
Storage Comment:	Store at 2-8°C. Protect from prolonged exposure to light. Do not freeze.



Flow Cytometry

Image 1. Flow cytometry intracellular staining pattern of ARHGEF4 in transfected HEK-293 cells stained using anti-ARHGEF4 (ARHGEF-08) PE antibody (concentration in sample 1 $\mu\text{g/mL}$, blue) and Mouse IgG1 Isotype Control (MOPC-21) PE antibody (concentration in sample 1 $\mu\text{g/mL}$, orange).

Western Blotting

Image 2. Western blotting analysis of ARHGEF4 in HEK293 cells (A) and HEK293-ARHGEF4 transfectants (B) using mouse monoclonal anti-ARHGEF4 (clone ARHGEF-08).