



[Go to Product page](#)

Datasheet for ABIN2749099
anti-CD103 antibody (APC)

2 Images

7 Publications

Overview

Quantity:	100 tests
Target:	CD103 (ITGAE)
Reactivity:	Human, Non-Human Primate
Host:	Mouse
Clonality:	Monoclonal
Conjugate:	This CD103 antibody is conjugated to APC
Application:	Flow Cytometry (FACS)

Product Details

Immunogen:	HTLV-1 induced human T cell line MAPS16
Clone:	Ber-ACT8
Isotype:	IgG1 kappa
Specificity:	The mouse monoclonal antibody Ber-ACT8 recognizes an extracellular epitope of CD103 (alpha E integrin), a type I transmembrane glycoprotein primarily found on intestinal intraepithelial lymphocytes.
Cross-Reactivity (Details):	Human, Non-Human Primates
Purification:	Purified antibody is conjugated with activated allophycocyanin (APC) under optimum conditions and unconjugated antibody and free fluorochrome are removed by size-exclusion chromatography.

Target Details

Target:	CD103 (ITGAE)
Alternative Name:	CD103 (ITGAE Products)
Background:	<p>Integrin subunit alpha E,CD103 / integrin alphaE is an integrin subunit that is expressed on intraepithelial lymphocytes, epithelial dendritic cells, lamina propria-derived dendritic cells, a subpopulation of lamina propria T cells, a small subset of peripheral lymphocytes, namely T reg cells, and on activated and TGF-beta stimulated lymphocytes. CD103 is in mature form cleaved into two disulfide-linked chains (C-terminal 150 kDa chain and N-terminal 25 kDa chain). It heterodimerizes with integrin beta7 subunit to form alphaE/beta7 integrin (mucosal lymphocyte 1 antigen), which through binding E-cadherin mediates homing of lymphocytes to the intestinal epithelium, and, in addition to the role in adhesion, may serve as an accessory molecule for intraepithelial lymphocyte activation.,Integrin alpha E, ITGAE</p>
Gene ID:	3682
UniProt:	P38570

Application Details

Application Notes:	<p>Flow cytometry: The reagent is designed for analysis of human blood cells using 10 µL reagent / 100 µL of whole blood or 10⁶ cells in a suspension. The content of a vial (1 ml) is sufficient for 100 tests.</p>
Comment:	<p>The purified antibody is conjugated with cross-linked Allophycocyanin (APC) under optimum conditions. The conjugate is purified by size-exclusion chromatography and adjusted for direct use. No reconstitution is necessary.</p>
Restrictions:	For Research Use only

Handling

Buffer:	Stabilizing phosphate buffered saline (PBS), pH 7.4, 15 mM sodium azide
Preservative:	Sodium azide
Precaution of Use:	This product contains Sodium azide: a POISONOUS AND HAZARDOUS SUBSTANCE which should be handled by trained staff only.
Storage:	4 °C
Storage Comment:	Store at 2-8°C. Protect from prolonged exposure to light. Do not freeze.

Publications

Product cited in:

Zhang, Bertucci, Ramsey-Goldman, Burt, Datta et al.: "Regulatory T cell (Treg) subsets return in patients with refractory lupus following stem cell transplantation, and TGF-beta-producing CD8+ Treg cells are associated with immunological remission of ..." in: **Journal of immunology (Baltimore, Md. : 1950)**, Vol. 183, Issue 10, pp. 6346-58, (2009) ([PubMed](#)).

Kost, Holden, Mann: "Marginal zone B-cell lymphoma: a retrospective immunophenotypic analysis." in: **Cytometry. Part B, Clinical cytometry**, Vol. 74, Issue 5, pp. 282-6, (2008) ([PubMed](#)).

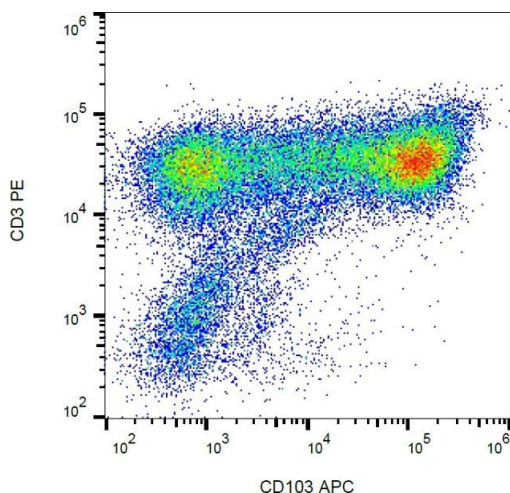
Cardoso, Garlet, Moreira, Júnior, Rossi, Silva: "Characterization of CD4+CD25+ natural regulatory T cells in the inflammatory infiltrate of human chronic periodontitis." in: **Journal of leukocyte biology**, Vol. 84, Issue 1, pp. 311-8, (2008) ([PubMed](#)).

León, Roy: "Isolation of human small bowel intraepithelial lymphocytes by annexin V-coated magnetic beads." in: **Laboratory investigation; a journal of technical methods and pathology**, Vol. 84, Issue 6, pp. 804-9, (2004) ([PubMed](#)).

Sigmundsdottir, Johnston, Gudjonsson, Bjarnason, Valdimarsson: "Methotrexate markedly reduces the expression of vascular E-selectin, cutaneous lymphocyte-associated antigen and the numbers of mononuclear leucocytes in psoriatic skin." in: **Experimental dermatology**, Vol. 13, Issue 7, pp. 426-34, (2004) ([PubMed](#)).

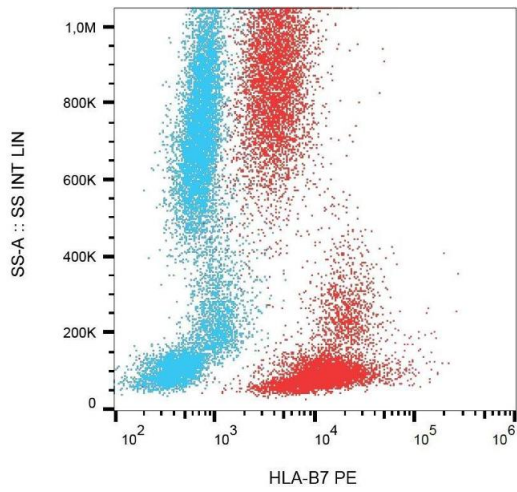
There are more publications referencing this product on: [Product page](#)

Images



Flow Cytometry

Image 1. Flow cytometry analysis (surface staining) of CD103 on PHA-activated PBMC with anti-CD103 (Ber-ACT8) APC.



Flow Cytometry

Image 2. Surface staining of CD103 on human peripheral blood cells with anti-CD103 (Ber-ACT8) APC.