

Datasheet for ABIN2749107

anti-PTPRJ antibody (AA 1-444) (APC)**2** Images[Go to Product page](#)

Overview

Quantity:	100 tests
Target:	PTPRJ
Binding Specificity:	AA 1-444
Reactivity:	Human
Host:	Mouse
Clonality:	Monoclonal
Conjugate:	This PTPRJ antibody is conjugated to APC
Application:	Flow Cytometry (FACS)

Product Details

Immunogen:	Human recombinant CD148 (amino acids 1-444)
Clone:	MEM-CD148-05
Isotype:	IgG2b
Specificity:	The mouse monoclonal antibody MEM-CD148/05 recognizes an extracellular epitope of CD148, a highly glycosylated up to 250 kDa receptor-like protein tyrosin phosphatase expressed mainly in lymphocytes, myeloid cells and epithelial cells.
Cross-Reactivity (Details):	Human
Purification:	Purified antibody is conjugated with activated allophycocyanin (APC) under optimum conditions and unconjugated antibody and free fluorochrome are removed by size-exclusion chromatography.

Target Details

Target:	PTPRJ
Alternative Name:	CD148 (PTPRJ Products)
Background:	Protein tyrosine phosphatase receptor type J,CD148 (also known as HPTP-eta or DEP-1) is a transmembrane protein tyrosin phosphatase, containing eight fibronectin type III extracellular domains. This protein is known to inhibit transduction of mitogenic signals in non-hematopoietic cells (fibroblasts, epithelial cells), and signal transduction downstream of T cell receptor, however, it also augments immunoreceptor signaling in B cells and macrophages via dephosphorylating C-terminal tyrosine of Src-family tyrosine kinases. CD148 expression increases after in vitro activation of peripheral blood leucocytes. It can be also used as marker of the most mature human thymocytes, and leukemic cells corresponding to this stadium of thymocyte differentiation. In contrast, in mice the CD148 expression sharply drops through the double positive stage to the single positive thymocytes.,HPTP-eta, DEP-1, PTPRJ, DEP1, SCC1, HPTPeta, R-PTP-ETA
Gene ID:	5795
UniProt:	Q12913
Pathways:	EGFR Signaling Pathway , Platelet-derived growth Factor Receptor Signaling

Application Details

Application Notes:	Flow cytometry: The reagent is designed for analysis of human blood cells using 10 µL reagent / 100 µL of whole blood or 10 ⁶ cells in a suspension. The content of a vial (1 ml) is sufficient for 100 tests.
Comment:	The purified antibody is conjugated with cross-linked Allophycocyanin (APC) under optimum conditions. The conjugate is purified by size-exclusion chromatography and adjusted for direct use. No reconstitution is necessary.
Restrictions:	For Research Use only

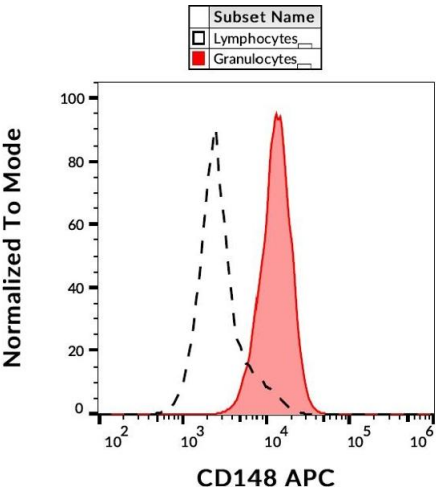
Handling

Buffer:	Stabilizing phosphate buffered saline (PBS), pH 7.4, 15 mM sodium azide
Preservative:	Sodium azide
Precaution of Use:	This product contains Sodium azide: a POISONOUS AND HAZARDOUS SUBSTANCE which should be handled by trained staff only.

Handling

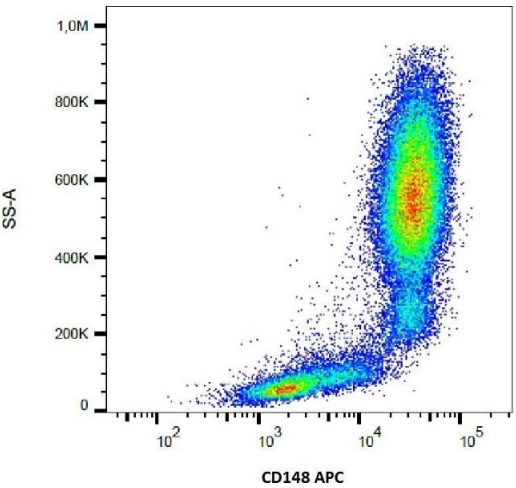
Storage:	4 °C
Storage Comment:	Store at 2-8°C. Protect from prolonged exposure to light. Do not freeze.

Images



Flow Cytometry

Image 1. Flow cytometry analysis (surface staining) of human peripheral blood using anti-CD148 (MEM-CD148/05) APC.



Flow Cytometry

Image 2. Surface staining of human peripheral blood using anti-CD148 (MEM-CD148/05) APC.