



[Go to Product page](#)

Datasheet for ABIN2749110  
**anti-BST1 antibody (PE)**

1 Image

### Overview

Quantity:	100 tests
Target:	BST1
Reactivity:	Human, Non-Human Primate
Host:	Mouse
Clonality:	Monoclonal
Conjugate:	This BST1 antibody is conjugated to PE
Application:	Flow Cytometry (FACS)

### Product Details

Immunogen:	Human CD157
Clone:	SY11B5
Isotype:	IgG1 kappa
Specificity:	The mouse monoclonal antibody SY11B5 recognizes CD157, an approximately 45 kDa GPI-anchored extracellular protein expressed mainly on monocytes, macrophages, granulocytes and bone marrow stromal cells.
Cross-Reactivity (Details):	Human, Non-Human Primates
Purification:	Purified antibody is conjugated with R-phycoerythrin (PE) under optimum conditions. Unconjugated antibody and free fluorochrome are removed by size-exclusion chromatography.

### Target Details

Target:	BST1
---------	------

## Target Details

---

Alternative Name:	CD157 ( <a href="#">BST1 Products</a> )
Background:	Bone marrow stromal cell antigen 1,CD157 (cADPr hydrolase 2) is a GPI-anchored ectoenzyme possessing ADP-ribosyl cyclase and cyclic ADP-ribose hydrolase activity. It uses NAD and cADP-ribose as substrates. CD157 is expressed on granulocytes, monocytes, macrophages, follicular dendritic cells, bone marrow stromal cells and human umbilical cord vein endothelial cells. In case of rheumatoid arthritis is expression is often higher and it is also differentially expressed in the myeloid leukemias. It may also have a signaling role.,BST1, cADPr hydrolase 2
Gene ID:	683
UniProt:	<a href="#">Q10588</a>

## Application Details

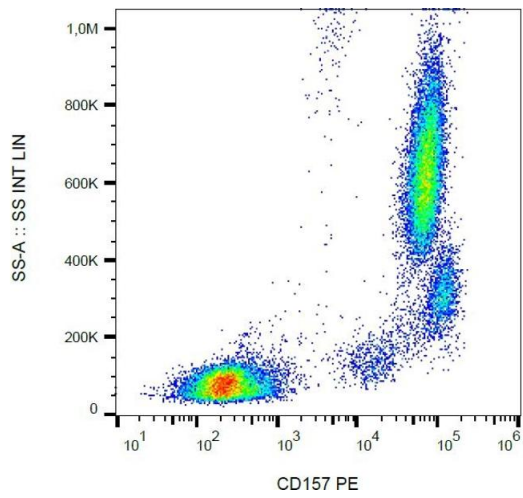
---

Application Notes:	Flow cytometry: The reagent is designed for analysis of human blood cells using 10 µL reagent / 100 µL of whole blood or 10 <sup>6</sup> cells in a suspension. The content of a vial (1 ml) is sufficient for 100 tests.
Comment:	The purified antibody is conjugated with R-Phycoerythrin (PE) under optimum conditions. The conjugate is purified by size-exclusion chromatography and adjusted for direct use. No reconstitution is necessary.
Restrictions:	For Research Use only

## Handling

---

Buffer:	Stabilizing phosphate buffered saline (PBS), pH 7.4, 15 mM sodium azide
Preservative:	Sodium azide
Precaution of Use:	This product contains Sodium azide: a POISONOUS AND HAZARDOUS SUBSTANCE which should be handled by trained staff only.
Storage:	4 °C
Storage Comment:	Store at 2-8°C. Protect from prolonged exposure to light. Do not freeze.



### Flow Cytometry

**Image 1.** Flow cytometry analysis (surface staining) of human peripheral blood leukocytes with anti-human CD157 (SY11B5) PE.