

Datasheet for ABIN2749127  
**anti-SIGLEC7 antibody (PE)**

## 3 Images

[Go to Product page](#)

## Overview

Quantity:	100 tests
Target:	SIGLEC7
Reactivity:	Human
Host:	Mouse
Clonality:	Monoclonal
Conjugate:	This SIGLEC7 antibody is conjugated to PE
Application:	Flow Cytometry (FACS)

## Product Details

Immunogen:	human dendritic cells
Clone:	6-434
Isotype:	IgG1
Specificity:	The mouse monoclonal antibody 6-434 recognizes an extracellular epitope of CD328 (Siglec-7), a 75 kDa transmembrane glycoprotein expressed mainly on NK cells, dendritic cells and monocytes.
Cross-Reactivity (Details):	Human
Purification:	Purified antibody is conjugated with R-phycoerythrin (PE) under optimum conditions. Unconjugated antibody and free fluorochrome are removed by size-exclusion chromatography.

## Target Details

Target:	SIGLEC7
---------	---------

## Target Details

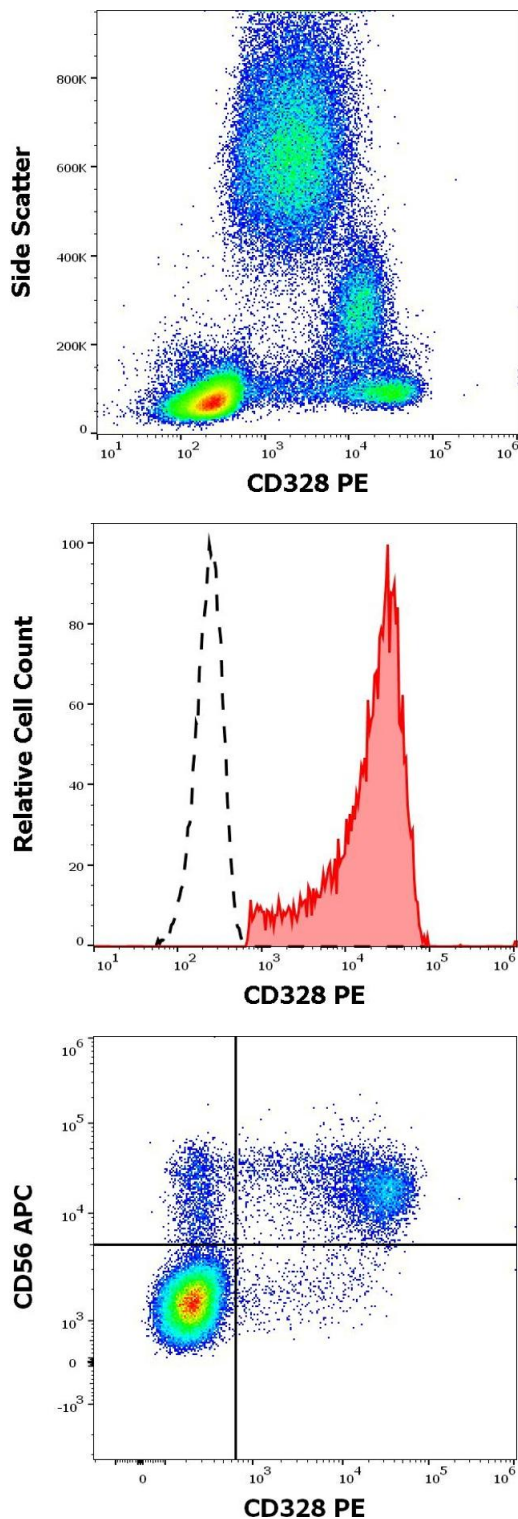
Alternative Name:	CD328 / Siglec-7 ( <a href="#">SIGLEC7 Products</a> )
Background:	<p>Sialic acid binding Ig like lectin 7,CD328, also known as Siglec-7 or p75/AIRM1, is a 75 kDa type I transmembrane glycoprotein of sialic acid-binding immunoglobulin-like lectin (Siglec) family. CD328 binds to sialylated glycans with alpha2,6 sialyl and alpha2,8 disialyl residues and mediates sialic acid-dependent cell-cell binding. As it contains in its intracellular part the immunoreceptor tyrosine-based inhibitory motif (ITIM), it serves as an inhibitory receptor, e.g. of NK cells.,SIGLEC7, p75/AIRM1, D-siglec</p>
Gene ID:	27036
UniProt:	<a href="#">Q9Y286</a>

## Application Details

Application Notes:	Flow cytometry: The reagent is designed for analysis of human blood cells using 10 µL reagent / 100 µL of whole blood or 10 <sup>6</sup> cells in a suspension. The content of a vial (1 ml) is sufficient for 100 tests.
Comment:	The purified antibody is conjugated with R-Phycoerythrin (PE) under optimum conditions. The conjugate is purified by size-exclusion chromatography and adjusted for direct use. No reconstitution is necessary.
Restrictions:	For Research Use only

## Handling

Buffer:	Stabilizing phosphate buffered saline (PBS), pH 7.4, 15 mM sodium azide
Preservative:	Sodium azide
Precaution of Use:	This product contains Sodium azide: a POISONOUS AND HAZARDOUS SUBSTANCE which should be handled by trained staff only.
Storage:	4 °C
Storage Comment:	Store at 2-8°C. Protect from prolonged exposure to light. Do not freeze.



### Flow Cytometry

**Image 1.** Flow cytometry surface staining pattern of human peripheral whole blood stained using anti-human CD328 (6-434) PE antibody (10  $\mu$ L reagent / 100  $\mu$ L of peripheral whole blood).

### Flow Cytometry

**Image 2.** Separation of human CD328 positive CD56 positive NK cells (red-filled) from CD328 negative CD56 negative lymphocytes (black-dashed) in flow cytometry analysis (surface staining) of human peripheral whole blood stained using anti-human CD328 (6-434) PE antibody (10  $\mu$ L reagent / 100  $\mu$ L of peripheral whole blood).

### Flow Cytometry

**Image 3.** Flow cytometry multicolor surface staining of human peripheral whole blood stained using anti-human CD328 (6-434) PE antibody (10  $\mu$ L reagent / 100  $\mu$ L of peripheral whole blood) and anti-human CD56 (LT56) APC antibody (10  $\mu$ L reagent / 100  $\mu$ L of peripheral whole blood).