

Datasheet for ABIN2749128
anti-CD35 antibody (FITC)



[Go to Product page](#)

2 Images

1 Publication

Overview

Quantity:	100 tests
Target:	CD35 (CR1)
Reactivity:	Human, Non-Human Primate
Host:	Mouse
Clonality:	Monoclonal
Conjugate:	This CD35 antibody is conjugated to FITC
Application:	Flow Cytometry (FACS)

Product Details

Immunogen:	Acute monocytic leukemia cells and normal blood monocytes
Clone:	E11
Isotype:	IgG1
Specificity:	The mouse monoclonal antibody E11 recognizes an extracellular epitope of CD35 (CR1), a type I transmembrane glycoprotein expressed on granulocytes, monocytes, B cells, follicular dendritic cells, erythrocytes, NK and T cell subsets, as well as e.g. on glomerular podocytes.
Cross-Reactivity (Details):	Human, Non-Human Primates
Purification:	Purified antibody is conjugated with fluorescein isothiocyanate (FITC) under optimum conditions and unconjugated antibody and free fluorochrome are removed by size-exclusion chromatography.

Target Details

Target:	CD35 (CR1)
Alternative Name:	CD35 (CR1 Products)
Background:	Complement C3b/C4b receptor 1 (Knops blood group),CD35 (complement receptor 1, CR1) is a monomeric multiple modular cell surface glycoprotein which serves as receptor for C3b and C4b, the most important components of the complement system leading to clearance of foreign macromolecules. It is expressed mainly on the surface of granulocytes, monocytes, erythrocytes, B cells and follicular dendritic cells. Besides its role in complement cascade, CD35 is involved in blocking BCR-induced proliferation and the differentiation of B cells to plasmablasts and their Ig production.,CR1, KN, C3BR, C4BR
Gene ID:	1378
UniProt:	P17927
Pathways:	Complement System , Regulation of Leukocyte Mediated Immunity , Positive Regulation of Endopeptidase Activity

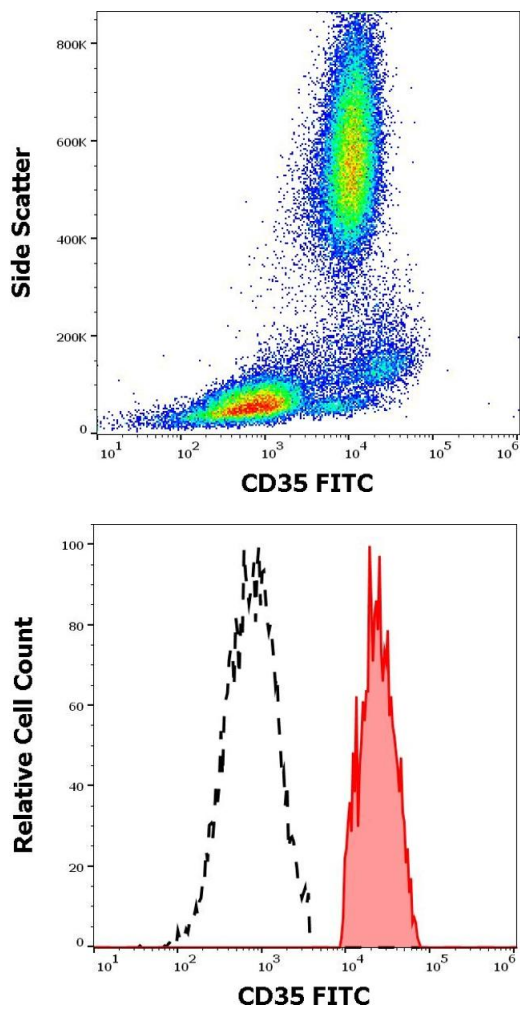
Application Details

Application Notes:	Flow cytometry: The reagent is designed for analysis of human blood cells using 4 µL reagent / 100 µL of whole blood or 10 ⁶ cells in a suspension. The content of a vial (0.4 ml) is sufficient for 100 tests.
Comment:	The purified antibody is conjugated with Fluorescein isothiocyanate (FITC) under optimum conditions. The reagent is free of unconjugated FITC and adjusted for direct use. No reconstitution is necessary.
Restrictions:	For Research Use only

Handling

Buffer:	Stabilizing phosphate buffered saline (PBS), pH 7.4, 15 mM sodium azide
Preservative:	Sodium azide
Precaution of Use:	This product contains Sodium azide: a POISONOUS AND HAZARDOUS SUBSTANCE which should be handled by trained staff only.
Storage:	4 °C
Storage Comment:	Store at 2-8°C. Protect from prolonged exposure to light. Do not freeze.

Product cited in: Hogg, Ross, Jones, Slusarenko, Walport, Lachmann: "Identification of an anti-monocyte monoclonal antibody that is specific for membrane complement receptor type one (CR1)." in: **European journal of immunology**, Vol. 14, Issue 3, pp. 236-43, (1984) ([PubMed](#)).



Flow Cytometry

Image 1. Flow cytometry surface staining pattern of human peripheral whole blood stained using anti-human CD35 (E11) FITC antibody (4 μ L reagent / 100 μ L of peripheral whole blood).

Flow Cytometry

Image 2. Separation of human monocytes (red-filled) from CD35 negative lymphocytes (black-dashed) in flow cytometry analysis (surface staining) of human peripheral whole blood stained using anti-human CD35 (E11) FITC antibody (4 μ L reagent / 100 μ L of peripheral whole blood).