

Datasheet for ABIN2749166

anti-CD160 antibody**3** Images**2** Publications[Go to Product page](#)

Overview

Quantity:	0.1 mg
Target:	CD160
Reactivity:	Human
Host:	Mouse
Clonality:	Monoclonal
Conjugate:	This CD160 antibody is un-conjugated
Application:	Flow Cytometry (FACS), Immunoprecipitation (IP)

Product Details

Immunogen:	Human NK cell line YT2C2
Clone:	BY55
Isotype:	IgM kappa
Specificity:	The mouse monoclonal antibody BY55 recognizes an extracellular epitope of CD160, a 27 kDa glycoprotein expressed on NK cells, NK-T cells, intestinal intraepithelial lymphocytes, TCR-gamma/delta T cells and a small population of TCR-alpha/beta T cells. The antibody detects both GPI-anchored and transmembrane form of CD160.
Cross-Reactivity (Details):	Human
Purification:	Purified by sequential steps of physicochemical fractionation (differential precipitation and solid-phase chromatography methods).
Purity:	> 95 % (by SDS-PAGE)

Target Details

Target:	CD160
Alternative Name:	CD160 (CD160 Products)
Background:	CD160 Molecule,CD160 is a cell surface glycoprotein of immunoglobulin superfamily, which functions as a costimulatory receptor expressed mainly on cytotoxic cell populations and recognizing both classical and non-classical MHC class I molecules. It can form disulfide-linked multimers. Down-modulation of CD160 occurs as a consequence of its proteolytic cleavage and the released soluble form was found to impair the MHC-class I specific cytotoxicity of CD8+ T lymphocytes and NK cells. In contrast to GPI-anchored isoform with broader expression among CD160 positive cells, expression of the transmembrane isoform is restricted to NK cells and is activation-dependent.,NK1, NK28
Gene ID:	11126
UniProt:	O95971

Application Details

Application Notes:	Flow cytometry: Recommended dilution: 1-4 µg/mL.
Restrictions:	For Research Use only

Handling

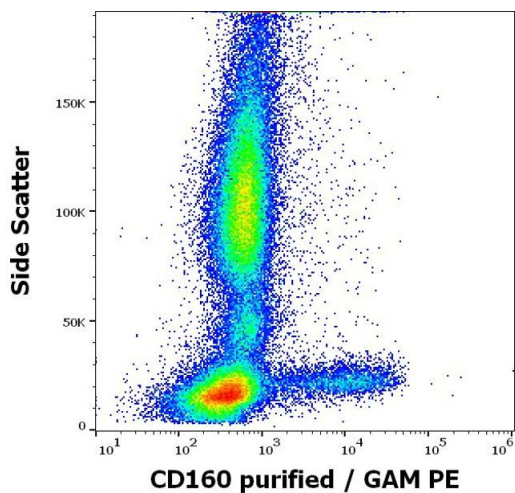
Concentration:	1 mg/mL
Buffer:	Tris buffered saline (TBS), pH 8.0, 15 mM sodium azide
Preservative:	Sodium azide
Precaution of Use:	This product contains Sodium azide: a POISONOUS AND HAZARDOUS SUBSTANCE which should be handled by trained staff only.
Storage:	4 °C
Storage Comment:	Store at 2-8°C. Do not freeze.

Publications

Product cited in:	Giustiniani, Bensussan, Marie-Cardine: "Identification and characterization of a transmembrane isoform of CD160 (CD160-TM), a unique activating receptor selectively expressed upon human NK cell activation." in: Journal of immunology (Baltimore, Md. : 1950) , Vol. 182, Issue 1, pp. 63-71, (2008) (PubMed).
-------------------	--

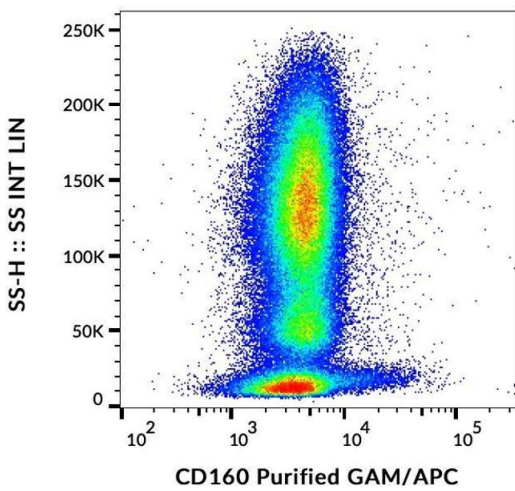
Merino, Ramírez, Moreno, Toledo, Fernández, Sánchez-Ibarrola: "BY55/CD160 cannot be considered a cytotoxic marker in cytomegalovirus-specific human CD8(+) T cells." in: **Clinical and experimental immunology**, Vol. 149, Issue 1, pp. 87-96, (2007) ([PubMed](#)).

Images



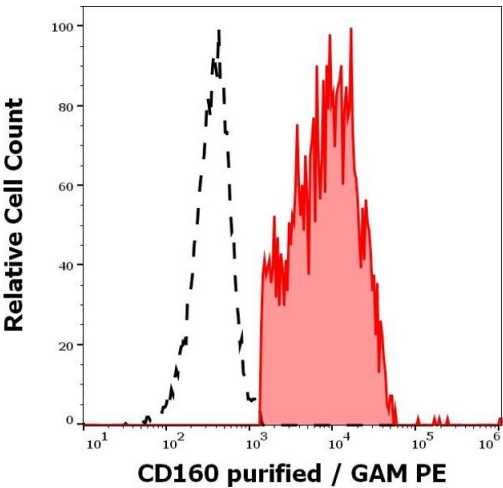
Flow Cytometry

Image 1. Flow cytometry surface staining pattern of human peripheral whole blood stained using anti-human CD160 (BY55) purified antibody (concentration in sample 5 µg/mL, GAM PE).



Flow Cytometry

Image 2. Surface staining of human peripheral blood cells with anti-CD160 (BY55) purified / GAM-APC.



Flow Cytometry

Image 3. Separation of human CD160 positive lymphocytes (red-filled) from CD160 negative lymphocytes (black-dashed) in flow cytometry analysis (surface staining) of human peripheral whole blood stained using anti-human CD160 (BY55) purified antibody (concentration in sample 5 µg/mL, GAM PE).