



[Go to Product page](#)

Datasheet for ABIN2749167
anti-OPAL1 antibody (AA 152-342)

3 Images

Overview

Quantity:	0.1 mg
Target:	OPAL1 (WBP1L)
Binding Specificity:	AA 152-342
Reactivity:	Human
Host:	Mouse
Clonality:	Monoclonal
Conjugate:	This OPAL1 antibody is un-conjugated
Application:	Western Blotting (WB), Flow Cytometry (FACS)

Product Details

Immunogen:	Recombinant fragment of human OPAL1 (amino acids 152-342)
Clone:	OPAL1-01
Isotype:	IgG2a
Specificity:	The mouse monoclonal antibody OPAL1-01 recognizes an intracellular epitope of OPAL1 (outcome predictor in acute leukemia 1), a transmembrane adaptor protein expressed mainly by megacaryocytes and platelets.
Cross-Reactivity (Details):	Human
Purification:	Purified by protein-A affinity chromatography.
Purity:	> 95 % (by SDS-PAGE)

Target Details

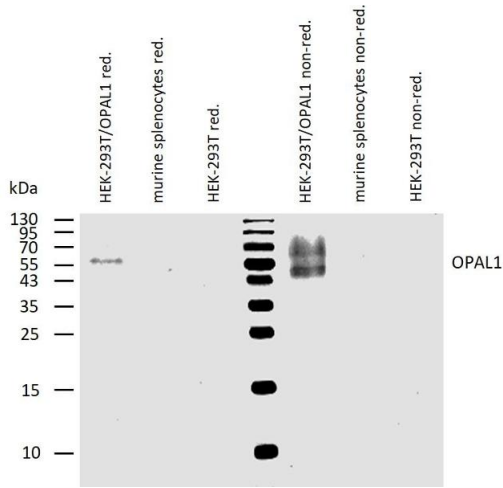
Target:	OPAL1 (WBP1L)
Alternative Name:	OPAL1 (WBP1L Products)
Background:	WW domain binding protein 1 like,OPAL1 (outcome predictor in acute leukemia 1) is an almost uncharacterized transmembrane adaptor protein expressed mainly by megacaryocytes and platelets. Its expression is enhanced on TEL/AML leukemic cells. The function of OPAL1 is unknown, although the presence of a cytochrome c-like heme-binding site and a transmembrane domain suggested OPAL1 may be involved in the mitochondrial electron transport chain. Its originally reported prognostic impact appears to be treatment dependent.,WBP1L
Gene ID:	54838
UniProt:	Q9NX94

Application Details

Application Notes:	Flow cytometry: Recommended dilution: 1-4 µg/mL, intracellular staining. Western blotting: Recommended dilution: 1-2 µg/mL, non-reducing conditions.
Restrictions:	For Research Use only

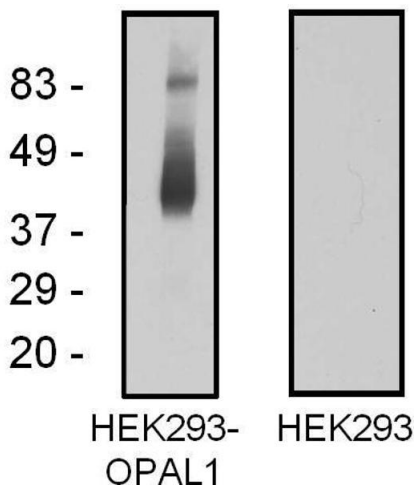
Handling

Concentration:	1 mg/mL
Buffer:	Tris buffered saline (TBS), pH 8.0, 15 mM sodium azide
Preservative:	Sodium azide
Precaution of Use:	This product contains Sodium azide: a POISONOUS AND HAZARDOUS SUBSTANCE which should be handled by trained staff only.
Storage:	4 °C
Storage Comment:	Store at 2-8°C. Do not freeze.



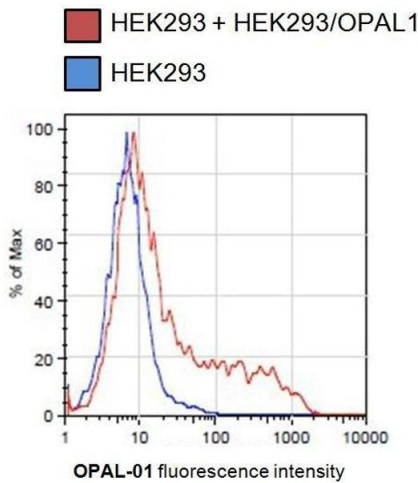
Western Blotting

Image 1. Western blotting analysis of human OPAL1 using mouse monoclonal antibody OPAL1-01 on lysates of HEK-293T/OPAL1 transfectants, and of murine splenocytes and HEK-293T cells (negative controls) under reducing and non-reducing conditions. Nitrocellulose membrane was probed with 2 µg/mL of mouse anti-OPAL1 monoclonal antibody followed by IRDye800-conjugated anti-mouse secondary antibody. OPAL1 was detected at around 45-60 kDa.



Western Blotting

Image 2. Western blotting analysis of OPAL1 in OPAL1-transfected HEK293 cells using mouse monoclonal antibody OPAL1-01.



Flow Cytometry

Image 3. Flow cytometry analysis of OPAL-transfected HEK293 cells using mouse monoclonal antibody