

Datasheet for ABIN2749168
anti-CD42b antibody (PE)[Go to Product page](#)

1 Image

2 Publications

Overview

Quantity:	100 tests
Target:	CD42b (GP1BA)
Reactivity:	Human
Host:	Mouse
Clonality:	Monoclonal
Conjugate:	This CD42b antibody is conjugated to PE
Application:	Flow Cytometry (FACS)

Product Details

Immunogen:	Human platelets
Clone:	AK2
Isotype:	IgG1
Specificity:	<p>The mouse monoclonal antibody AK2 recognizes an extracellular epitope of CD42b (GPIb alpha), a 135-145 kDa membrane glycoprotein expressed on platelets and megakaryocytes. CD42b and CD42c (GPIb beta) are composed in a disulfide linked heterodimer (CD42b/c, 160 kDa), CD42b/c forms a noncovalent complex with CD42a and CD42d.</p>
Cross-Reactivity (Details):	Human
Purification:	<p>Purified antibody is conjugated with R-phycoerythrin (PE) under optimum conditions.</p> <p>Unconjugated antibody and free fluorochrome are removed by size-exclusion chromatography.</p>

Target Details

Target:	CD42b (GP1BA)
Alternative Name:	CD42b (GP1BA Products)
Background:	Glycoprotein Ib platelet subunit alpha,CD42b (GPIb alpha) composes together with GPIb beta, GPIX and GPV the GPIb-IX-V receptor complex critical in the process of platelet-rich thrombus formation by tethering the platelet to a thrombogenic surface. CD42b binds to von Willebrand factor (VWF) exposed at a site of vascular injury, as well as to thrombin, coagulation factors XI and XII, high molecular weight kininogen, TSP-1, integrin Mac-1 and P-selectin. The extracellular domain of CD42b by its interactions also contributes to metastasis.,BSS, GP1B, VWDP, CD42B, GPIbA, BDPLT1, BDPLT3, DBPLT3
Gene ID:	2811
UniProt:	P07359

Application Details

Application Notes:	Flow cytometry: The reagent is designed for analysis of human blood cells using 10 µL reagent / 100 µL of whole blood or 10 ⁶ cells in a suspension. The content of a vial (1 ml) is sufficient for 100 tests.
Comment:	The purified antibody is conjugated with R-Phycoerythrin (PE) under optimum conditions. The conjugate is purified by size-exclusion chromatography and adjusted for direct use. No reconstitution is necessary.
Restrictions:	For Research Use only

Handling

Buffer:	Stabilizing phosphate buffered saline (PBS), pH 7.4, 15 mM sodium azide
Preservative:	Sodium azide
Precaution of Use:	This product contains Sodium azide: a POISONOUS AND HAZARDOUS SUBSTANCE which should be handled by trained staff only.
Storage:	4 °C
Storage Comment:	Store at 2-8°C. Protect from prolonged exposure to light. Do not freeze.

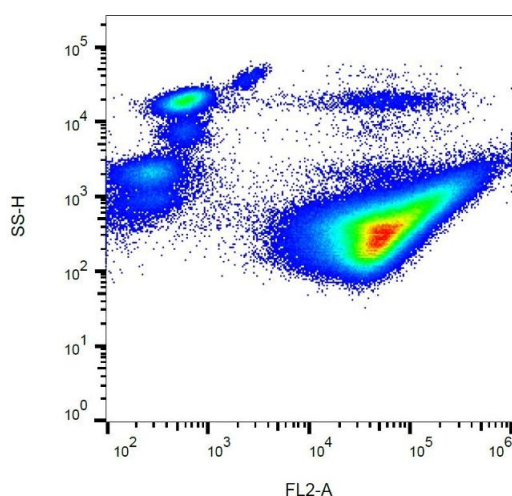
Publications

Product cited in:	Welsh, Colace, Muthard, Stalker, Brass, Diamond: "Platelet-targeting sensor reveals thrombin
-------------------	--

gradients within blood clots forming in microfluidic assays and in mouse." in: **Journal of thrombosis and haemostasis : JTH**, Vol. 10, Issue 11, pp. 2344-53, (2014) ([PubMed](#)).

Vettore, Scandellari, Moro, Lombardi, Scapin, Randi, Fabris et al.: "Novel point mutation in a leucine-rich repeat of the GPIIb/IIIa chain of the platelet von Willebrand factor receptor, GPIIb/IX/V, resulting in an inherited dominant form of Bernard-Soulier syndrome ..." in: **Haematologica**, Vol. 93, Issue 11, pp. 1743-7, (2008) ([PubMed](#)).

Images



Flow Cytometry

Image 1. Flow cytometry analysis (surface staining) of human peripheral blood with anti-human CD42b (AK2) PE.