

Datasheet for ABIN2749193

anti-NR2F6 antibody**2** Images[Go to Product page](#)

Overview

Quantity:	0.1 mg
Target:	NR2F6
Reactivity:	Human
Host:	Mouse
Clonality:	Monoclonal
Conjugate:	This NR2F6 antibody is un-conjugated
Application:	Western Blotting (WB), Flow Cytometry (FACS)

Product Details

Immunogen:	Recombinant human NR2F6 protein expressed in E. coli
Clone:	EM-51
Isotype:	IgG2a kappa
Specificity:	The mouse monoclonal antibody EM-51 recognizes NR2F6, a transcriptional repressor (intracellular antigen) expressed mainly in the heart, placenta, liver, skeletal muscle, kidney and pancreas, but also e.g. in T cell subpopulations.
Cross-Reactivity (Details):	Human
Purification:	Purified by protein-A affinity chromatography.
Purity:	> 95 % (by SDS-PAGE)

Target Details

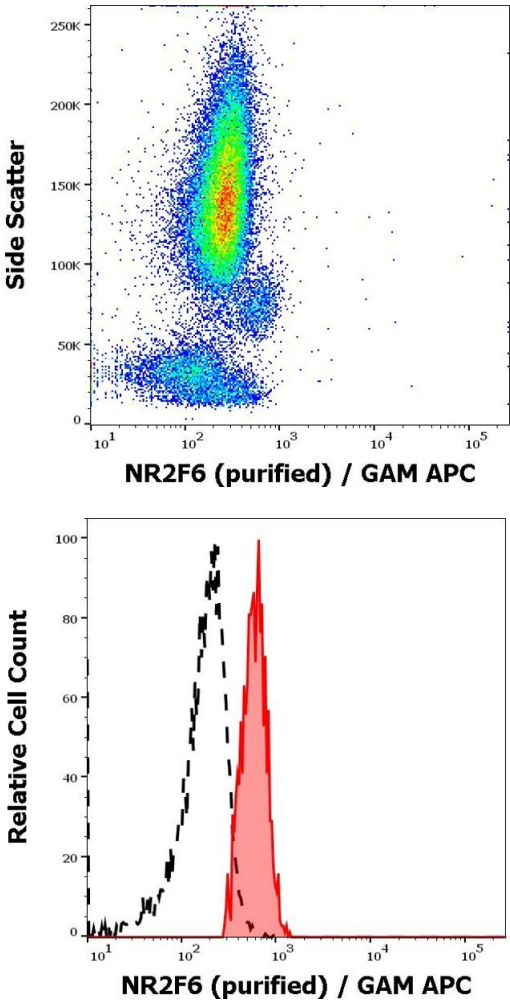
Target:	NR2F6
Alternative Name:	NR2F6 (NR2F6 Products)
Background:	Nuclear receptor subfamily 2 group F member 6, NR2F6 (nuclear receptor subfamily 2 group F member 6), also known as EAR2 or ERBAL2, is a transcription factor involved in modulation of hormonal responses. NR2F6 represses e.g. transcription of the oxytocin-neurophysin gene, renin gene, lutropin-choriogonadotropic hormone receptor gene, and the thyroid hormone receptor gene. In the immune system, NR2F6 affects IL-17 expression in the Th-17 cells, thus also the balance between immunological tolerance and autoimmunity., EAR2, EAR-2, ERBAL2
Gene ID:	2063
UniProt:	P10588
Pathways:	Nuclear Receptor Transcription Pathway , Steroid Hormone Mediated Signaling Pathway , Photoperiodism

Application Details

Application Notes:	Western blotting: Positive control: HEK293T/17/NR2F6/Ha-tag transfectants, negative control: HEK293T/17 cells. Flow cytometry: Recommended dilution: 3-9 µg/mL. Intracellular staining.
Restrictions:	For Research Use only

Handling

Concentration:	1 mg/mL
Buffer:	Phosphate buffered saline (PBS), pH 7.4, 15 mM sodium azide
Preservative:	Sodium azide
Precaution of Use:	This product contains Sodium azide: a POISONOUS AND HAZARDOUS SUBSTANCE which should be handled by trained staff only.
Storage:	4 °C
Storage Comment:	Store at 2-8°C. Do not freeze.



Flow Cytometry

Image 1. Flow cytometry intracellular staining pattern of human peripheral whole blood stained using anti-NR2F6 (EM-51) purified antibody (concentration in sample 3 µg/mL, GAM APC).

Flow Cytometry

Image 2. Separation of human monocytes stained using anti-NR2F6 (EM-51) purified antibody (concentration in sample 3 µg/mL, GAM APC, red-filled) from monocytes unstained by primary antibody (GAM APC, black-dashed) in flow cytometry analysis (intracellular staining).