

Datasheet for ABIN2749194
anti-Ki-67 antibody (PE)



[Go to Product page](#)

1 Image 3 Publications

Overview

Quantity:	100 tests
Target:	Ki-67 (MKI67)
Reactivity:	Human, Cow
Host:	Mouse
Clonality:	Polyclonal
Conjugate:	This Ki-67 antibody is conjugated to PE
Application:	Intracellular Flow Cytometry (ICFC)

Product Details

Purpose:	Anti-Ki-67 PE
Immunogen:	Nuclei of the Hodgkin lymphoma cell line L428
Isotype:	IgG1
Specificity:	The mouse monoclonal antibody Ki-67 recognizes Ki-67 antigen, a non-histone nuclear protein expressed exclusively in proliferating cells.
Cross-Reactivity (Details):	Human, Bovine
Purification:	Purified antibody is conjugated with R-phycoerythrin (PE) under optimum conditions. Unconjugated antibody and free fluorochrome are removed by size-exclusion chromatography.

Target Details

Target:	Ki-67 (MKI67)
---------	---------------

Target Details

Alternative Name:	Ki-67 (MKI67 Products)
Background:	<p>Marker of proliferation Ki-67, Ki-67 is a highly protease-sensitive nuclear protein expressed in two isoforms (345 kDa and 395 kDa), both of which are identified by the antibody clone Ki-67. The Ki-67 antigen is essential for cell proliferation and its expression is restricted to the cycling cells. It is detected in G1, S, G2 and M phase, whereas it is absent in cells which are in G0 phase and it is not associated with DNA repair processes. Ki-67 thus represents an important tool for detection of proliferating cells, which is of great importance in tumor diagnostics and is commonly used as a prognostic factor in cancer studies. KIA, MIB, Marker of proliferation Ki67, MKI67</p>
Gene ID:	4288
UniProt:	P46013
Pathways:	Glycosaminoglycan Metabolic Process

Application Details

Application Notes:	Flow cytometry: The reagent is designed for analysis of human blood cells using 10 µL reagent / 100 µL of whole blood or 10 ⁶ cells in a suspension. The content of a vial (1 ml) is sufficient for 100 tests. Intracellular staining.
Restrictions:	For Research Use only

Handling

Buffer:	Stabilizing phosphate buffered saline (PBS), pH 7.4, 15 mM sodium azide
Preservative:	Sodium azide
Precaution of Use:	This product contains Sodium azide: a POISONOUS AND HAZARDOUS SUBSTANCE which should be handled by trained staff only.
Storage:	4 °C
Storage Comment:	Store at 2-8°C. Protect from prolonged exposure to light. Do not freeze.

Publications

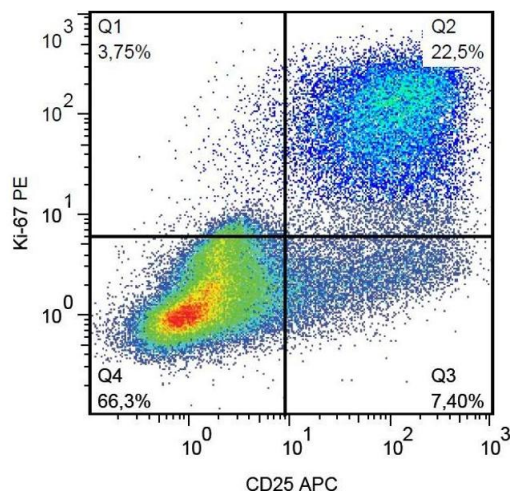
Product cited in:	Schlüter, Duchrow, Wohlenberg, Becker, Key, Flad, Gerdes: "The cell proliferation-associated antigen of antibody Ki-67: a very large, ubiquitous nuclear protein with numerous repeated elements, representing a new kind of cell cycle-maintaining proteins." in: The Journal of cell
-------------------	---

biology, Vol. 123, Issue 3, pp. 513-22, (1993) ([PubMed](#)).

Gerdess, Lemke, Baisch, Wacker, Schwab, Stein: "Cell cycle analysis of a cell proliferation-associated human nuclear antigen defined by the monoclonal antibody Ki-67." in: **Journal of immunology (Baltimore, Md. : 1950)**, Vol. 133, Issue 4, pp. 1710-5, (1984) ([PubMed](#)).

Gerdess, Schwab, Lemke, Stein: "Production of a mouse monoclonal antibody reactive with a human nuclear antigen associated with cell proliferation." in: **International journal of cancer. Journal international du cancer**, Vol. 31, Issue 1, pp. 13-20, (1983) ([PubMed](#)).

Images



Flow Cytometry

Image 1. Flow cytometry analysis of human peripheral blood mononuclear cells stimulated with PHA. Surface staining of CD25 (clone MEM-181 APC) was followed by permeabilization and nuclear staining of Ki-67 (clone Ki-67 PE).