

Datasheet for ABIN2749199
anti-PVRL2 antibody (PE)



[Go to Product page](#)

2 Images

2 Publications

Overview

Quantity:	100 tests
Target:	PVRL2
Reactivity:	Human
Host:	Mouse
Clonality:	Monoclonal
Conjugate:	This PVRL2 antibody is conjugated to PE
Application:	Flow Cytometry (FACS)

Product Details

Immunogen:	NIH/3T3 cells transfected with human Nectin-2
Clone:	R2-525
Isotype:	IgG1 kappa
Specificity:	The mouse monoclonal antibody R2.525 recognizes an extracellular epitope on CD112, a type I transmembrane glycoprotein expressed by myelomonocytic and megakaryocytic cells, and by CD34+ hematopoietic progenitors.
Cross-Reactivity (Details):	Human
Purification:	Purified antibody is conjugated with R-phycoerythrin (PE) under optimum conditions. Unconjugated antibody and free fluorochrome are removed by size-exclusion chromatography.

Target Details

Target:	PVRL2
---------	-------

Target Details

Alternative Name:	CD112 (PVRL2 Products)
Background:	Nectin cell adhesion molecule 2,CD112, also known as nectin-2, is a transmembrane glycoprotein involved in organization of adherens junctions. It also serves as a target molecule for entry of certain strains of herpes simplex virus (HSV) and pseudorabies virus (PRV). It is homologous to CD155, which serves as a target molecule for polio virus. CD112 seems to play a role in neural tube formation, with N-cadherin. Inside the cell, CD112 is connected with actin cytoskeleton through afadin. Variations in the CD112 gene have been associated with differences in the severity of multiple sclerosis. Alternate transcriptional splice variants, encoding different isoforms, have been characterized.,NECTIN2, HVEB, PRR2, PVRL2, PVRR2
Gene ID:	5819
UniProt:	Q92692
Pathways:	Regulation of Leukocyte Mediated Immunity , Positive Regulation of Immune Effector Process , Cell-Cell Junction Organization

Application Details

Application Notes:	Flow cytometry: The reagent is designed for analysis of human blood cells using 10 µL reagent / 100 µL of whole blood or 10 ⁶ cells in a suspension. The content of a vial (1 ml) is sufficient for 100 tests.
Comment:	The purified antibody is conjugated with R-Phycoerythrin (PE) under optimum conditions. The conjugate is purified by size-exclusion chromatography and adjusted for direct use. No reconstitution is necessary.
Restrictions:	For Research Use only

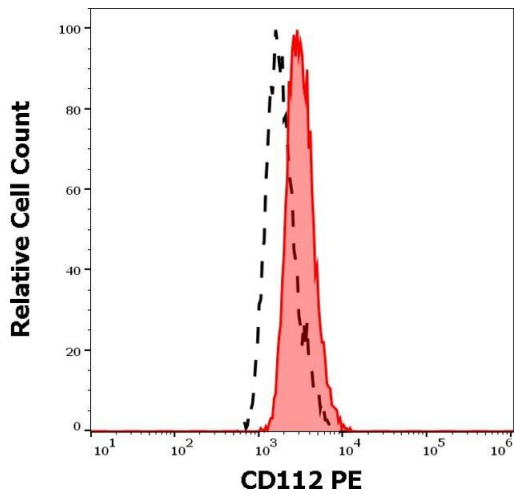
Handling

Buffer:	Stabilizing phosphate buffered saline (PBS), pH 7.4, 15 mM sodium azide
Preservative:	Sodium azide
Precaution of Use:	This product contains Sodium azide: a POISONOUS AND HAZARDOUS SUBSTANCE which should be handled by trained staff only.
Storage:	4 °C
Storage Comment:	Store at 2-8°C. Protect from prolonged exposure to light. Do not freeze.

Product cited in: Hou, Ge, Zheng, Wei, Sun, Tian: "CD226 protein is involved in immune synapse formation and triggers Natural Killer (NK) cell activation via its first extracellular domain." in: **The Journal of biological chemistry**, Vol. 289, Issue 10, pp. 6969-77, (2014) ([PubMed](#)).

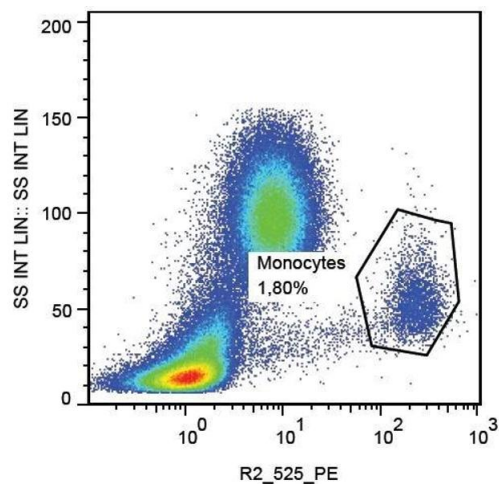
Enqvist, Nilssonne, Hammarfjord, Wallin, Björkström, Björnstedt, Hjerpe, Ljunggren, Dobra, Malmberg, Carlsten: "Selenite induces posttranscriptional blockade of HLA-E expression and sensitizes tumor cells to CD94/NKG2A-positive NK cells." in: **Journal of immunology (Baltimore, Md. : 1950)**, Vol. 187, Issue 7, pp. 3546-54, (2011) ([PubMed](#)).

Images



Flow Cytometry

Image 1. Separation of CACO-2 cells stained using anti-human CD112 (R2.525) PE antibody (10 µL reagent per million cells in 100 µL of cell suspension, red-filled) from CACO-2 cells stained using mouse IgG1 isotype control (MOPC-21) PE antibody (concentration in sample 5 µg/mL, same as CD112 PE concentration, black-dashed) in flow cytometry analysis (surface staining) of CACO-2 cell suspension.



Flow Cytometry

Image 2. Surface staining of human peripheral blood using anti-CD112 (R2.525) PE.