



[Go to Product page](#)

Datasheet for ABIN2749214
anti-KIR2DL5A antibody

3 Images

1 Publication

Overview

Quantity:	0.1 mg
Target:	KIR2DL5A
Reactivity:	Human
Host:	Mouse
Clonality:	Monoclonal
Conjugate:	This KIR2DL5A antibody is un-conjugated
Application:	Flow Cytometry (FACS), Immunocytochemistry (ICC)

Product Details

Immunogen:	Human CD158f-Ig fusion protein
Clone:	UP-R1
Isotype:	IgG1 kappa
Specificity:	The mouse monoclonal antibody UP-R1 recognizes an extracellular epitope on CD158f (KIR2DL5), a 60 kDa glycoprotein serving as a HLA class I ligand, and mainly expressed on a subset of NK cells and a small population of T cells. Its expression is highly polymorphic between individuals.
Cross-Reactivity (Details):	Human
Purification:	Purified by protein-A affinity chromatography.
Purity:	> 95 % (by SDS-PAGE)

Target Details

Target:	KIR2DL5A
Alternative Name:	CD158f (KIR2DL5A Products)
Background:	<p>Killer cell immunoglobulin like receptor, two Ig d,CD158f, also known as KIR2DL5, is a polymorphic 60 kDa transmembrane glycoprotein with two Ig-like extracellular domains by which it recognize HLA class I molecules. Its long intracellular domain contains immunoreceptor tyrosine-based inhibitory motifs (ITIMs) that upon extracellular ligand-mediated phosphorylation serve as docking sites for inhibitory phosphatases, which results in blocking natural cytotoxicity as well as antibody-dependent cytotoxicity of the particular NK cell, and its adhesion toward target cells. Together with other killer inhibitory receptors CD158f is important for immunological tolerance to discriminate between normal and abnormal cells. Besides NK cells it is expressed on a small population of cytotoxic T cells. Expression of CD158f alleles is highly variable in the population.,KIR2DL5A</p>
Gene ID:	57292
UniProt:	Q8N109

Application Details

Application Notes:	Flow cytometry: Recommended dilution: 1-4 µg/mL.
Restrictions:	For Research Use only

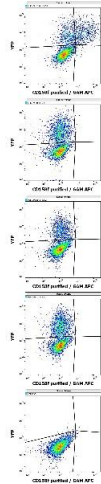
Handling

Concentration:	1 mg/mL
Buffer:	Phosphate buffered saline (PBS), pH 7.4, 15 mM sodium azide
Preservative:	Sodium azide
Precaution of Use:	This product contains Sodium azide: a POISONOUS AND HAZARDOUS SUBSTANCE which should be handled by trained staff only.
Storage:	4 °C
Storage Comment:	Store at 2-8°C. Do not freeze.

Publications

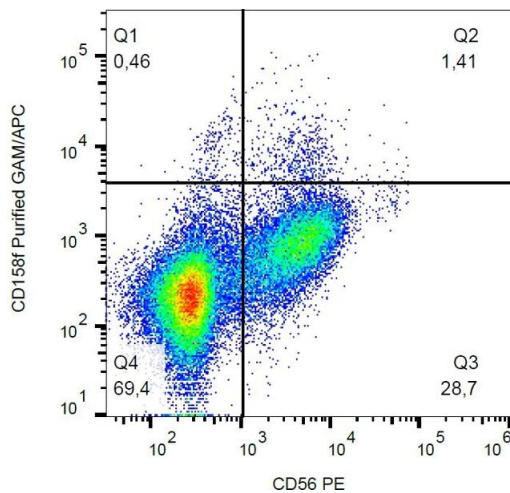
Product cited in:	Estefanía, Flores, Gómez-Lozano, Aguilar, López-Botet, Vilches: "Human KIR2DL5 is an inhibitory receptor expressed on the surface of NK and T lymphocyte subsets." in: Journal of
-------------------	------------------------------------------------------------------------------------------------------------------------------------------------------------------------------------------

Images



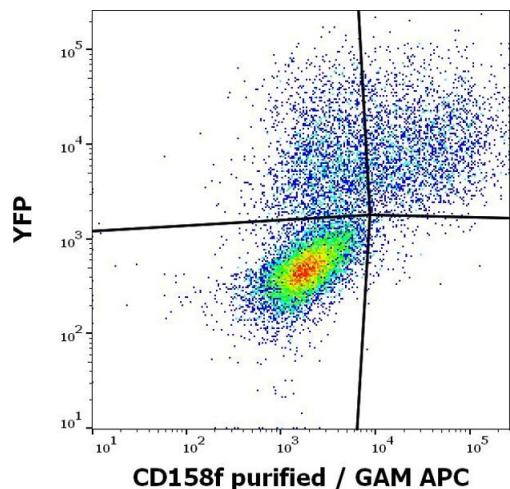
Flow Cytometry

Image 1. Flow cytometry surface staining patterns of non-transfected HEK-293 cells and HEK-293 cells transfected with KIR-family coding plasmids co-transfected with YFP coding plasmid using anti-human CD158f (UP-R1) purified antibody (concentration in sample 4 µg/mL, GAM APC).



Flow Cytometry

Image 2. Flow cytometry analysis (surface staining) of human peripheral blood with anti-CD158f (UP-R1) purified / GAM-APC.



Flow Cytometry

Image 3. Flow cytometry surface staining pattern of KIR2DL5A (CD158f) transfected HEK-293 cells co-transfected with YFP coding plasmid using anti-human CD158f (UP-R1) purified antibody (concentration in sample 4 µg/mL, GAM APC).