



[Go to Product page](#)

Datasheet for ABIN2749235

anti-Ftsz antibody

2 Images

Overview

Quantity:	50 µL
Target:	Ftsz
Reactivity:	E. coli, Shigella flexneri
Host:	Rabbit
Clonality:	Polyclonal
Conjugate:	This Ftsz antibody is un-conjugated
Application:	Immunofluorescence (IF), Western Blotting (WB)

Product Details

Immunogen:	KLH-conjugated synthetic peptide derived from known bacterial sequences of FtsZ including E.coli P0A9A6
Cross-Reactivity:	Escherichia coli (E. coli)
No Cross-Reactivity:	Bacillus subtilis, Listeria
Cross-Reactivity (Details):	Not reactive in: B. subtilis, Listeria sp., Pseudomonas aeruginosa, cyanobacteria
Predicted Reactivity:	Candidatus sp., Citrobacter sp. 30_2, Dickeya sp., Enterobacter sp., Klebsiella pneumoniae subsp. pneumoniae MGH, Salmonella sp., Shigella sonnei Ss046, Vibrio sp., Yersinia pestis D182038
Characteristics:	Expected / apparent Molecular Weight of the Antigen: 40 / 42 kDa FtsZ (cell division GTPase) is a well characterized protein of the bacterial cell division apparatus. This protein accumulates early in dividing cells, and has a crucial role during septum formation in most bacteria. It has also been accepted as the bacterial cytoskeletal counterpart

Product Details

to eukaryotic microtubules. Synonymes: sifB, SulB.

Purification: serum

Target Details

Target: Ftsz

Abstract: [Ftsz Products](#)

Background: FtsZ (cell division GTPase) is a well characterized protein of the bacterial cell division apparatus. This protein accumulates early in dividing cells, and has a crucial role during septum formation in most bacteria. It has also been accepted as the bacterial cytoskeletal counterpart to eukaryotic microtubules. Synonymes: sifB, SulB.

Molecular Weight: expected: 40 kDa, apparent: 42 kDa

UniProt: [P0A9A6](#)

Application Details

Application Notes: 1 : 1000 with standard ECL (WB), 1:100 - 1: 200 (IF)

Restrictions: For Research Use only

Handling

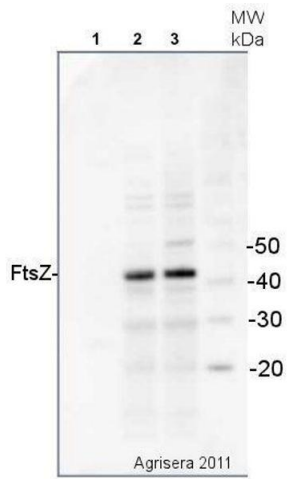
Format: Lyophilized

Reconstitution: For reconstitution add 50 µL of sterile water.

Handling Advice: Please, remember to spin tubes briefly prior to opening them to avoid any losses that might occur from lyophilized material adhering to the cap or sides of the tubes.
Once reconstituted make aliquots to avoid repeated freeze-thaw cycles.

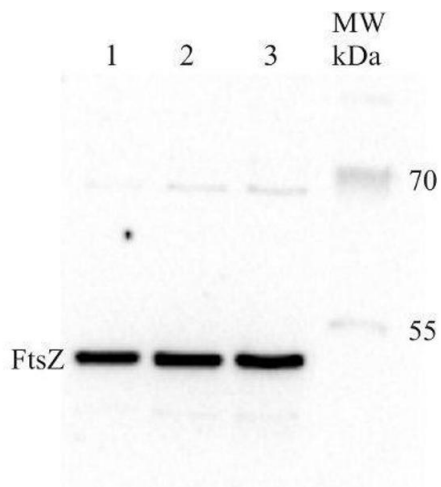
Storage: -20 °C

Storage Comment: store lyophilized/reconstituted at -20°C, once reconstituted make aliquots to avoid repeated freeze-thaw cycles. Please, remember to spin tubes briefly prior to opening them to avoid any losses that might occur from lyophilized material adhering to the cap or sides of the tubes.



Western Blotting

Image 1.



Western Blotting

Image 2.