

Datasheet for ABIN2749236
IL1RAP Protein (AA 21-359) (His tag)



[Go to Product page](#)

1 Image

Overview

Quantity:	100 µg
Target:	IL1RAP
Protein Characteristics:	AA 21-359
Origin:	Human
Source:	HEK-293 Cells
Protein Type:	Recombinant
Purification tag / Conjugate:	This IL1RAP protein is labelled with His tag.

Product Details

Sequence:	AA 21-359
Characteristics:	This protein carries a polyhistidine tag at the C-terminus. The protein has a calculated MW of 40 kDa. The protein migrates as 50-60 kDa under reducing (R) condition (SDS-PAGE) due to glycosylation.
Purity:	>95 % as determined by SDS-PAGE.
Sterility:	0.22 µm filtered
Endotoxin Level:	Less than 1.0 EU per µg by the LAL method.

Target Details

Target:	IL1RAP
Alternative Name:	IL-1 RAcP (IL1RAP Products)

Target Details

Background: Interleukin-1 receptor accessory protein (IL1RAP or IL-1RAcP) is also known as Interleukin-1 receptor 3 (IL-1R-3 or IL-1R3), C3orf13, which belongs to the interleukin-1 receptor family. IL1RAP contains three Ig-like C2-type (immunoglobulin-like) domains and one TIR domain. IL1RAP is detected in liver, skin, placenta, thymus and lung. IL-1R3 / IL1RAP is coreceptor with IL1R1, associates with IL1R1 bound to IL1B to form the high affinity interleukin-1 receptor complex which mediates interleukin-1-dependent activation of NF-kappa-B and other pathways.

Molecular Weight: 40.2 kDa

UniProt: [Q9NPH3](#)

Pathways: [NF-kappaB Signaling](#), [Growth Factor Binding](#)

Application Details

Restrictions: For Research Use only

Handling

Format: Lyophilized

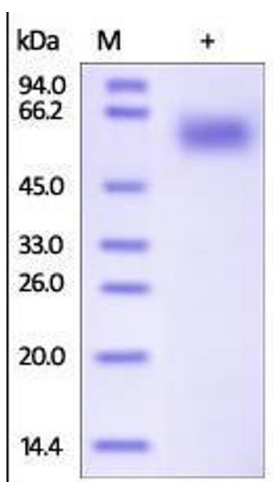
Buffer: PBS, pH 7.4

Handling Advice: Please avoid repeated freeze-thaw cycles.

Storage: -20 °C

Storage Comment: No activity loss was observed after storage at: In lyophilized state for 1 year (4 °C), After reconstitution under sterile conditions for 3 months (-70 °C).

Images



SDS-PAGE

Image 1. Human IL-1 RAcP, His Tag on SDS-PAGE under reducing (R) condition. The gel was stained overnight with Coomassie Blue. The purity of the protein is greater than 95%.