

Datasheet for ABIN2749238

PDCD1LG2 Protein (AA 20-219) (Fc Tag)[Go to Product page](#)

4 Images

Overview

Quantity:	100 µg
Target:	PDCD1LG2
Protein Characteristics:	AA 20-219
Origin:	Human
Source:	HEK-293 Cells
Protein Type:	Recombinant
Biological Activity:	Active
Purification tag / Conjugate:	This PDCD1LG2 protein is labelled with Fc Tag.

Product Details

Sequence:	AA 20-219
Characteristics:	This protein carries a human IgG1 Fc tag at the C-terminus. The protein has a calculated MW of 49.2 kDa. The protein migrates as 60-70 kDa under reducing (R) condition (SDS-PAGE) due to glycosylation.
Purity:	>95 % as determined by SDS-PAGE.
Sterility:	0.22 µm filtered
Endotoxin Level:	Less than 1.0 EU per µg by the LAL method.

Target Details

Target:	PDCD1LG2
---------	----------

Target Details

Alternative Name:	PD-L2 (PDCD1LG2 Products)
Background:	<p>Programmed cell death 1 ligand 2 (PD-L2 or PDCD1 ligand 2) is also known as Butyrophilin B7-DC, CD antigen CD273, which belongs to the immunoglobulin superfamily or BTN/MOG family. The expression of PD-L2 is up-regulated by IFNG/IFN-gamma stimulation in monocytes and induced on dendritic cells grown from peripheral blood mononuclear cells with CSF2 and IL-4. PD-L2 Involved in the costimulatory signal, essential for T-cell proliferation and IFNG production in a PDCD1-independent manner. PD-L2 interaction with PDCD1 inhibits T-cell proliferation by blocking cell cycle progression and cytokine production.</p>
Molecular Weight:	49.2 kDa

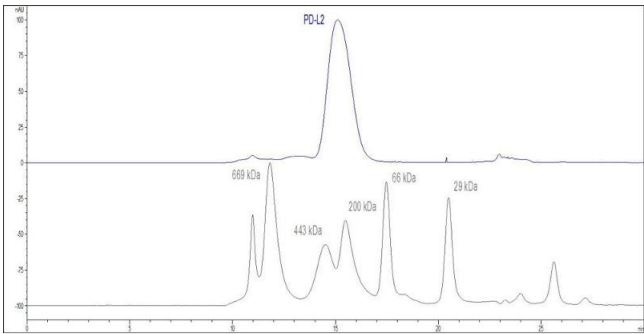
Application Details

Restrictions:	For Research Use only
---------------	-----------------------

Handling

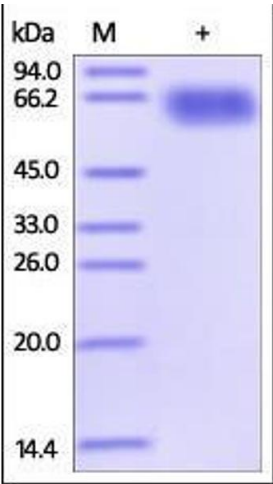
Format:	Lyophilized
Buffer:	PBS, pH 7.4
Handling Advice:	Please avoid repeated freeze-thaw cycles.
Storage:	-20 °C
Storage Comment:	No activity loss was observed after storage at: In lyophilized state for 1 year (4 °C), After reconstitution under sterile conditions for 3 months (-70 °C).

Images



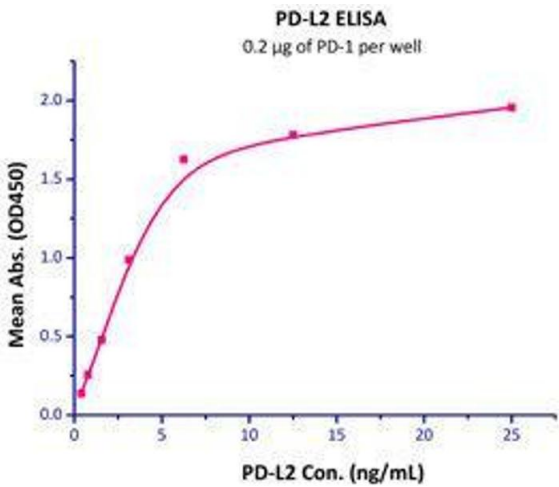
High Pressure Liquid Chromatography

Image 1. The purity of Human PD-L2, Fc Tag (HPLC verified) (ABIN2181601,ABIN2749238) was greater than 90 % as determined by .



SDS-PAGE

Image 2. Human PD-L2, Fc Tag (HPLC-verified) on SDS-PAGE under reducing (R) condition. The gel was stained overnight with Coomassie Blue. The purity of the protein is greater than 95%.



Binding Studies

Image 3. Immobilized Human PD-1, His Tag with a linear range of 0.16-2.5 µg/mL.

Please check the [product details page](#) for more images. Overall 4 images are available for ABIN2749238.