

Datasheet for ABIN2752001

anti-CD42b antibody[Go to Product page](#)

2 Images

2 Publications

Overview

Quantity:	0.1 mg
Target:	CD42b (GP1BA)
Reactivity:	Human
Host:	Mouse
Clonality:	Monoclonal
Conjugate:	This CD42b antibody is un-conjugated
Application:	Flow Cytometry (FACS), Western Blotting (WB), ELISA, Immunoprecipitation (IP), Immunocytochemistry (ICC)

Product Details

Immunogen:	Human platelets
Clone:	AK2
Isotype:	IgG1
Specificity:	The mouse monoclonal antibody AK2 recognizes an extracellular epitope of CD42b (GPIb alpha), a 135-145 kDa membrane glycoprotein expressed on platelets and megakaryocytes. CD42b and CD42c (GPIb beta) are composed in a disulfide linked heterodimer (CD42b/c, 160 kDa), CD42b/c forms a noncovalent complex with CD42a and CD42d.
Cross-Reactivity (Details):	Human
Purification:	Purified by protein-A affinity chromatography.
Purity:	> 95 % (by SDS-PAGE)

Product Details

Endotoxin Level: Endotoxin level is less than 0.01 EU/μg of the protein, as determined by the LAL test.

Target Details

Target: CD42b (GP1BA)

Alternative Name: CD42b ([GP1BA Products](#))

Background: Glycoprotein Ib platelet subunit alpha,CD42b (GPIb alpha) composes together with GPIb beta, GPIX and GPV the GPIb-IX-V receptor complex critical in the process of platelet-rich thrombus formation by tethering the platelet to a thrombogenic surface. CD42b binds to von Willebrand factor (VWF) exposed at a site of vascular injury, as well as to thrombin, coagulation factors XI and XII, high molecular weight kininogen, TSP-1, integrin Mac-1 and P-selectin. The extracellular domain of CD42b by its interactions also contributes to metastasis.,BSS, GP1B, VWDP, CD42B, GPIbA, BDPLT1, BDPLT3, DBPLT3

Gene ID: 2811

UniProt: [P07359](#)

Application Details

Application Notes: Flow cytometry: Recommended dilution: 1-4 μg/mL.

Restrictions: For Research Use only

Handling

Concentration: 1 mg/mL

Buffer: Phosphate buffered saline (PBS), pH 7.4

Preservative: Azide free

Storage: 4 °C

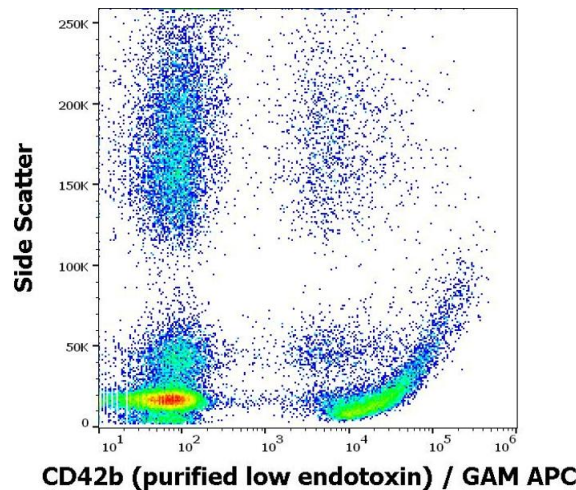
Storage Comment: Store at 2-8°C. Do not freeze.

Publications

Product cited in: Welsh, Colace, Muthard, Stalker, Brass, Diamond: "Platelet-targeting sensor reveals thrombin gradients within blood clots forming in microfluidic assays and in mouse." in: **Journal of thrombosis and haemostasis : JTH**, Vol. 10, Issue 11, pp. 2344-53, (2014) ([PubMed](#)).

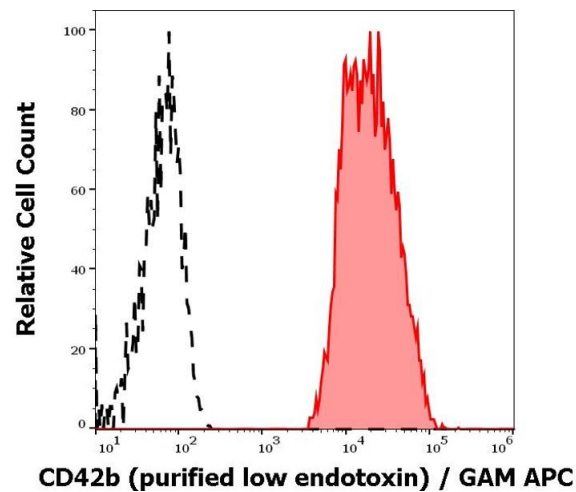
Vettore, Scandellari, Moro, Lombardi, Scapin, Randi, Fabris et al.: "Novel point mutation in a leucine-rich repeat of the GPIbalpha chain of the platelet von Willebrand factor receptor, GPIb/IX/V, resulting in an inherited dominant form of Bernard-Soulier syndrome ..." in: **Haematologica**, Vol. 93, Issue 11, pp. 1743-7, (2008) ([PubMed](#)).

Images



Flow Cytometry

Image 1. Flow cytometry surface staining pattern of human peripheral blood stained using anti-human CD42b (AK2) purified antibody (low endotoxin, concentration in sample 4 µg/mL) GAM APC.



Flow Cytometry

Image 2. Separation of human thrombocytes (red-filled) from CD42b negative lymphocytes (black-dashed) in flow cytometry analysis (surface staining) of human peripheral whole blood stained using anti-human CD42b (AK2) purified antibody (low endotoxin, concentration in sample 4 µg/mL) GAM APC.