



[Go to Product page](#)

Datasheet for ABIN2752022

## IL13 (Human) Matched Antibody Pair

### 1 Image

#### Overview

Quantity: 1 set

Target: IL-13 (IL13)

Reactivity: Human

Host: Mouse

Application: ELISA

#### Product Details

Purpose: This antibody pair set comes with matched antibody pair to detect and quantify protein level of human IL13.

Cross-Reactivity: Human

Characteristics: This antibody pair set comes with matched antibody pair to detect and quantify protein level of human IL13.

Components: Antibody pair set content:  
1. Capture antibody: mouse monoclonal anti-IL13, IgG2a Kappa (100 µg)  
2. Detection antibody: biotinylated mouse monoclonal anti-IL13, IgG2a Kappa (50 µg)  
\*Reagents are sufficient for at least 3-5 x 96 well plates using recommended protocols.

#### Target Details

Target: IL-13 (IL13)

Alternative Name: IL13 ([IL13 Products](#))

Background: Full Gene Name: interleukin 13

## Target Details

Synonyms: ALRH,BHR1,IL-13,MGC116786,MGC116788,MGC116789,P600

Gene ID: 3596

## Application Details

Application Notes: Optimal working dilution should be determined by the investigator.

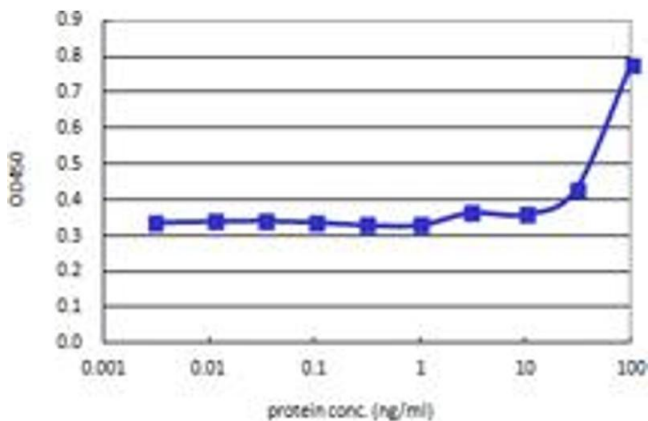
Restrictions: For Research Use only

## Handling

Storage: -20 °C

Storage Comment: Store reagents of the antibody pair set at -20°C or lower. Please aliquot to avoid repeated freeze thaw cycle. Reagents should be returned to -20°C storage immediately after use.

## Images



### ELISA

**Image 1.** Sandwich ELISA detection sensitivity ranging from 10 ng/ml to 100 ng/ml.