

Datasheet for ABIN2752030

MALT1 (Human) IP-WB Antibody Pair**1** Image[Go to Product page](#)

Overview

Quantity:	1 set
Target:	MALT1
Reactivity:	Human
Host:	Rabbit, Mouse
Application:	Immunoprecipitation (IP)

Product Details

Purpose:	This IP-WB antibody pair set comes with one antibody for immunoprecipitation and another to detect the precipitated protein in western blot.
Cross-Reactivity:	Human
Characteristics:	This IP-WB antibody pair set comes with one antibody for immunoprecipitation and another to detect the precipitated protein in western blot.
Components:	Antibody pair set content: 1. Antibody pair for IP: rabbit polyclonal anti-MALT1 (300 µL) 2. Antibody pair for WB: mouse purified polyclonal anti-MALT1 (50 µg)

Target Details

Target:	MALT1
Alternative Name:	MALT1 (MALT1 Products)
Background:	Full Gene Name: mucosa associated lymphoid tissue lymphoma translocation gene 1 Synonyms: DKFZp434L132,MLT,MLT1

Target Details

Gene ID: 10892

Application Details

Application Notes: Optimal working dilution should be determined by the investigator.

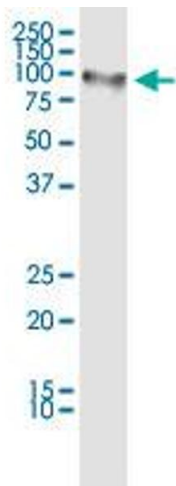
Restrictions: For Research Use only

Handling

Storage: -20 °C

Storage Comment: Store reagents of the antibody pair set at -20°C or lower. Please aliquot to avoid repeated freeze thaw cycle. Reagents should be returned to -20°C storage immediately after use.

Images



Immunoprecipitation

Image 1. Immunoprecipitation of MALT1 transfected lysate using rabbit polyclonal anti-MALT1 and Protein A Magnetic Bead (U0007), and immunoblotted with mouse purified polyclonal anti-MALT1.