



[Go to Product page](#)

Datasheet for ABIN2752031

MAPK10 (Human) Matched Antibody Pair

1 Image

Overview

Quantity: 1 set

Target: MAPK10

Reactivity: Human

Host: Mouse

Application: ELISA

Product Details

Purpose: This antibody pair set comes with matched antibody pair to detect and quantify protein level of human MAPK10.

Cross-Reactivity: Human

Characteristics: This antibody pair set comes with matched antibody pair to detect and quantify protein level of human MAPK10.

Components: Antibody pair set content:

1. Capture antibody: mouse monoclonal anti-MAPK10, IgG1 Kappa (100 µg)
2. Detection antibody: biotinylated mouse monoclonal anti-MAPK10, IgG1 Kappa (50 µg)

*Reagents are sufficient for at least 3-5 x 96 well plates using recommended protocols.

Target Details

Target: MAPK10

Alternative Name: MAPK10 ([MAPK10 Products](#))

Background: Full Gene Name: mitogen-activated protein kinase 10

Target Details

Synonyms: FLJ12099,FLJ33785,JNK3,JNK3A,MGC50974,PRKM10,p493F12,p54bSAPK

Gene ID: 5602

Application Details

Application Notes: Optimal working dilution should be determined by the investigator.

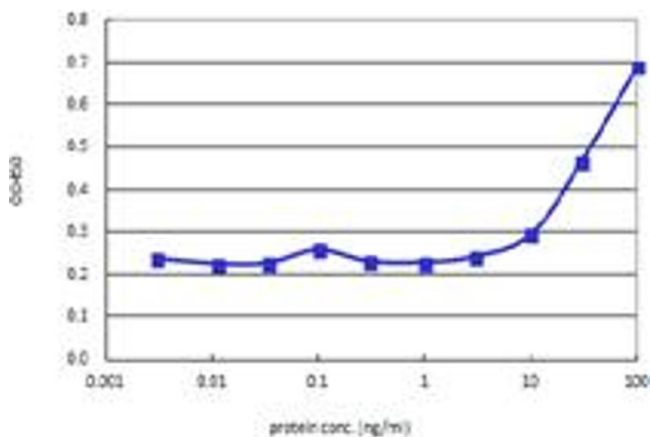
Restrictions: For Research Use only

Handling

Storage: -20 °C

Storage Comment: Store reagents of the antibody pair set at -20°C or lower. Please aliquot to avoid repeated freeze thaw cycle. Reagents should be returned to -20°C storage immediately after use.

Images



ELISA

Image 1. Sandwich ELISA detection sensitivity ranging from 10 ng/ml to 100 ng/ml.