

Datasheet for ABIN2752035
SGCG (Human) Matched Antibody Pair



[Go to Product page](#)

1 Image

Overview

Quantity: 1 set

Target: SGCG

Reactivity: Human

Host: Rabbit, Mouse

Application: ELISA

Product Details

Purpose: This antibody pair set comes with matched antibody pair to detect and quantify protein level of human SGCG.

Cross-Reactivity: Human

Characteristics: This antibody pair set comes with matched antibody pair to detect and quantify protein level of human SGCG.

Components: Antibody pair set content:
1. Capture antibody: rabbit affinity purified polyclonal anti-SGCG (100 µg)
2. Detection antibody: mouse purified polyclonal anti-SGCG (20 µg)
*Reagents are sufficient for at least 1-2 x 96 well plates using recommended protocols.

Target Details

Target: SGCG

Alternative Name: SGCG ([SGCG Products](#))

Background: Full Gene Name: sarcoglycan, gamma (35 kDa dystrophin-associated glycoprotein)

Target Details

Synonyms: A4,DAGA4,DMDA,DMDA1,LGMD2C,MAM,MGC130048,SCARMD2,SCG3,TYPE

Gene ID: 6445

Application Details

Application Notes: Optimal working dilution should be determined by the investigator.

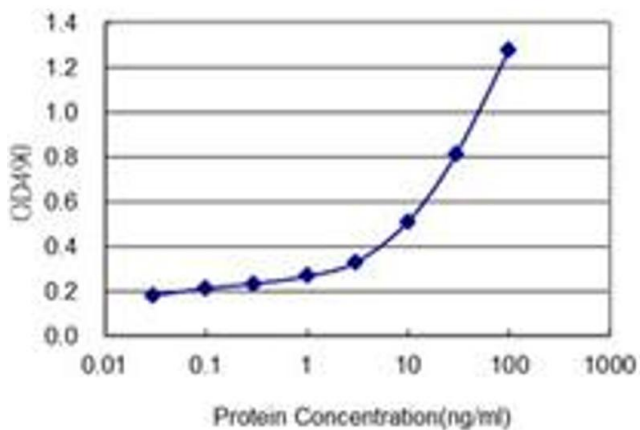
Restrictions: For Research Use only

Handling

Storage: -20 °C

Storage Comment: Store reagents of the antibody pair set at -20°C or lower. Please aliquot to avoid repeated freeze thaw cycle. Reagents should be returned to -20°C storage immediately after use.

Images



ELISA

Image 1. Sandwich ELISA detection sensitivity ranging from 1 ng/ml to 100 ng/ml.