



Datasheet for ABIN2752036

SGCG (Human) IP-WB Antibody Pair



[Go to Product page](#)

1 Image

Overview

Quantity:	1 set
Target:	SGCG
Reactivity:	Human
Host:	Rabbit, Mouse
Application:	Immunoprecipitation (IP)

Product Details

Purpose:	This IP-WB antibody pair set comes with one antibody for immunoprecipitation and another to detect the precipitated protein in western blot.
Cross-Reactivity:	Human
Characteristics:	This IP-WB antibody pair set comes with one antibody for immunoprecipitation and another to detect the precipitated protein in western blot.
Components:	Antibody pair set content: 1. Antibody pair for IP: rabbit polyclonal anti-SGCG (300 µL) 2. Antibody pair for WB: mouse purified polyclonal anti-SGCG (50 µg)

Target Details

Target:	SGCG
Alternative Name:	SGCG (SGCG Products)
Background:	Full Gene Name: sarcoglycan, gamma (35 kDa dystrophin-associated glycoprotein) Synonyms: A4,DAGA4,DMDA,DMDA1,LGMD2C,MAM,MGC130048,SCARMD2,SCG3,TYPE

Target Details

Gene ID: 6445

Application Details

Application Notes: Optimal working dilution should be determined by the investigator.

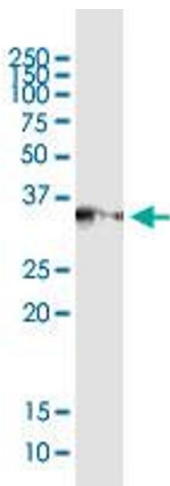
Restrictions: For Research Use only

Handling

Storage: -20 °C

Storage Comment: Store reagents of the antibody pair set at -20°C or lower. Please aliquot to avoid repeated freeze thaw cycle. Reagents should be returned to -20°C storage immediately after use.

Images



Immunoprecipitation

Image 1. Immunoprecipitation of SGCG transfected lysate using rabbit polyclonal anti-SGCG and Protein A Magnetic Bead (U0007), and immunoblotted with mouse purified polyclonal anti-SGCG.