



[Go to Product page](#)

Datasheet for ABIN2752038

TBX6 (Human) Matched Antibody Pair

1 Image

Overview

Quantity: 1 set

Target: T-Box 6 (TBX6)

Reactivity: Human

Host: Mouse

Application: ELISA

Product Details

Purpose: This antibody pair set comes with matched antibody pair to detect and quantify protein level of human TBX6.

Cross-Reactivity: Human

Characteristics: This antibody pair set comes with matched antibody pair to detect and quantify protein level of human TBX6.

Components: Antibody pair set content:

1. Capture antibody: mouse monoclonal anti-TBX6, IgG2a Kappa (100 µg)
 2. Detection antibody: biotinylated mouse monoclonal anti-TBX6, IgG2a Kappa (50 µg)
- *Reagents are sufficient for at least 3-5 x 96 well plates using recommended protocols.

Target Details

Target: T-Box 6 (TBX6)

Alternative Name: TBX6 ([TBX6 Products](#))

Background: Full Gene Name: T-box 6

Target Details

Synonyms: DFNB67

Gene ID: 6911

Application Details

Application Notes: Optimal working dilution should be determined by the investigator.

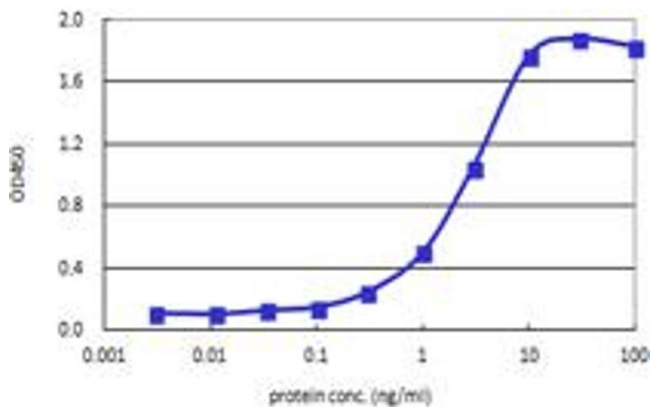
Restrictions: For Research Use only

Handling

Storage: -20 °C

Storage Comment: Store reagents of the antibody pair set at -20°C or lower. Please aliquot to avoid repeated freeze thaw cycle. Reagents should be returned to -20°C storage immediately after use.

Images



ELISA

Image 1. Sandwich ELISA detection sensitivity ranging from 0.1 ng/ml to 100 ng/ml.