



[Go to Product page](#)

Datasheet for ABIN2752196
anti-DTWD1 antibody (AA 1-304)

4 Images

Overview

Quantity:	100 µg
Target:	DTWD1
Binding Specificity:	AA 1-304
Reactivity:	Human
Host:	Mouse
Clonality:	Monoclonal
Conjugate:	This DTWD1 antibody is un-conjugated
Application:	ELISA, Western Blotting (WB)

Product Details

Purpose:	Mouse monoclonal antibody raised against a full-length recombinant DTWD1.
Immunogen:	DTWD1 (NP_064619.2, 1 a.a. ~ 304 a.a) full-length recombinant protein with GST tag. MW of the GST tag alone is 26 KDa.
Sequence:	MSLNPPIFLK RSEENSSKFV ETQSQTTSI ASEDPLQNLCLASQEV LQKA QQSGRSKCLK CGGSRMFYCY TCYVPVENVP IEQIPLVKLP LKIDIIKHPN ETDGKSTAIH AKLLAPEFVN IYTYPPIPEY EEKDHEVALI FPGPQSISIK DISFHLQKRI QNNVRGKNDD PDKPSFKRKR TEEQEFCDLN DSKCKGTTLK KIIFIDSTWN QTNKIFTDER LQGLLQVELK TRKTCFWRHQ KGGPDTFLST IEAIYYFLVD YHTDILKEYK RGQYDNLFFF YSFMYQLIKN AKCSGDKETG KLTH
Clone:	2E6
Isotype:	IgG2a
Cross-Reactivity:	Human

Product Details

Characteristics: Antibody Reactive Against Recombinant Protein.

Target Details

Target: DTWD1

Alternative Name: DTWD1 ([DTWD1 Products](#))

Background: Full Gene Name: DTW domain containing 1
Synonyms: MDS009,MGC111207

Gene ID: 56986

NCBI Accession: [NM_020234](#)

Application Details

Application Notes: Optimal working dilution should be determined by the investigator.

Restrictions: For Research Use only

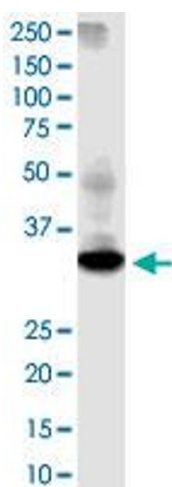
Handling

Buffer: In 1x PBS, pH 7.4

Storage: -20 °C

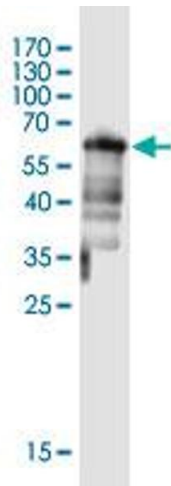
Storage Comment: Store at -20°C or lower. Aliquot to avoid repeated freezing and thawing.

Images



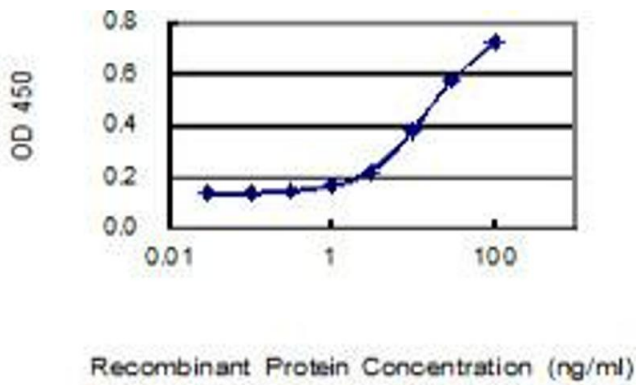
Western Blotting

Image 1. DTWD1 monoclonal antibody (M02), clone 2E6. Western Blot analysis of DTWD1 expression in human ovarian cancer.



Western Blotting

Image 2. Western Blot detection against Immunogen (61.6 KDa).



ELISA

Image 3. Detection limit for recombinant GST tagged DTWD1 is 0.3 ng/ml as a capture antibody.

Please check the [product details page](#) for more images. Overall 4 images are available for ABIN2752196.