



[Go to Product page](#)

Datasheet for ABIN2752197

anti-Ectodysplasin A antibody (AA 245-391)

1 Image

Overview

| | |
|----------------------|------------------------------------------------|
| Quantity: | 100 µg |
| Target: | Ectodysplasin A (EDA) |
| Binding Specificity: | AA 245-391 |
| Reactivity: | Human |
| Host: | Mouse |
| Clonality: | Monoclonal |
| Conjugate: | This Ectodysplasin A antibody is un-conjugated |
| Application: | Western Blotting (WB), ELISA |

Product Details

| | |
|-------------------|--------------------------------------------------------------------------------------------------------------------------------------------------------------------------|
| Purpose: | Mouse monoclonal antibody raised against a partial recombinant EDA. |
| Immunogen: | EDA (NP_001390.1 , 245 a.a. ~ 391 a.a) partial recombinant protein. |
| Sequence: | ENQPAVVHLQ GQGSIAIQVKN DLSGGVLNDW SRITMNPKVF KLHPRSGELE VLVDGTYFIY SQVEVYYINF TDFASYEVVV DEKPFLQCTR SIETGKTNYN TCYTAGVCLL KARQKIAVKM VHADISINMS KHTTFFGAIR LGEAPAS |
| Clone: | 3E12 |
| Isotype: | IgG2a |
| Cross-Reactivity: | Human |
| Characteristics: | Antibody Reactive Against Recombinant Protein. |

Target Details

| | |
|-------------------|-----------------------------------------------------------------------------------------|
| Target: | Ectodysplasin A (EDA) |
| Alternative Name: | EDA (EDA Products) |
| Background: | Full Gene Name: ectodysplasin A Synonyms: ED1,ED1-A1,ED1-A2,EDA1,EDA2,HED,XHED,XLHED |
| Gene ID: | 1896 |
| NCBI Accession: | NM_001399 |
| Pathways: | Tube Formation |

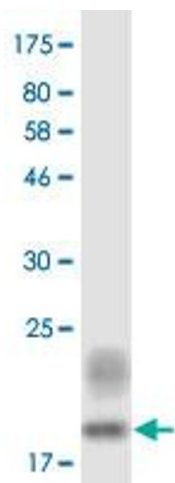
Application Details

| | |
|--------------------|--------------------------------------------------------------------|
| Application Notes: | Optimal working dilution should be determined by the investigator. |
| Restrictions: | For Research Use only |

Handling

| | |
|------------------|--------------------------------------------------------------------------|
| Buffer: | In 1x PBS, pH 7.4 |
| Storage: | -20 °C |
| Storage Comment: | Store at -20°C or lower. Aliquot to avoid repeated freezing and thawing. |

Images



Western Blotting

Image 1. Western Blot detection against Immunogen (18.37 kDa).