



[Go to Product page](#)

Datasheet for ABIN2752224
anti-Endoglin antibody (AA 27-658)

4 Images

Overview

Quantity:	50 µg
Target:	Endoglin (ENG)
Binding Specificity:	AA 27-658
Reactivity:	Human
Host:	Mouse
Clonality:	Monoclonal
Conjugate:	This Endoglin antibody is un-conjugated
Application:	Western Blotting (WB), ELISA, Immunofluorescence (IF)

Product Details

Purpose:	Mouse monoclonal antibody raised against a full-length recombinant ENG.
Immunogen:	ENG (AAH14271, 27 a.a. ~ 658 a.a) full-length recombinant protein with GST tag. MW of the GST tag alone is 26 KDa.
Sequence:	TVHCDLQPVG PERDEVYTT SQVSKGCVAQ APNAILEVHV LFLEFPTGPS QLELTLQASK QNGTWPREVL LVLSVNSSVF LHLQALGIPL HLAYNSSLVT FQEPGVTNT ELPSFPKTQI LEWAAERGPI TSAAELNDPQ SILLRLGQAQ GSLSFCMLEA SQDMGRTLEW RPRTPALVRG CHLEGVAGHK EAHILRVLPG HSAGPRTVTV KVELSCAPGD LDAVLILQGP PYVSWLIDAN HNMQIWTGGE YSFKIFPEKN IRGFKLPDTP QLLGEARML NASIVASFVE LPLASIVSLH ASSCGGRLQT SPAPIQTTPP KDTCSPELLM SLIQTCCADD AMTLVLKKEK VAHLKCTITG LTFWDPSCEA EDRGDKFVLR SAYSSCGMQV SASMISNEAV VNILSSSSPQ RKKVHCLNMD SLSFQLGLYL SPHFLQASNT IEPGQQSFVQ VRVSPSVSEF LLQLDSCHLD LGPEGGTVEL IQGRAAKGNC VLLSPSPEG DPRFSFLLHF YTVPIPKTGT LSCTVALRPK TGSQDQEVHR

Product Details

TVFMRLNIIS PDLSGCTSKG LVLPAVLGIT FGAFLIGALL TAALWYIYSH TRSPSKREPV
VAVAAPASSE SSSTNHSIGS TQSTPCSTSS MA

Clone:	1E5
Isotype:	IgG2b
Cross-Reactivity:	Human
Characteristics:	Antibody Reactive Against Recombinant Protein.

Target Details

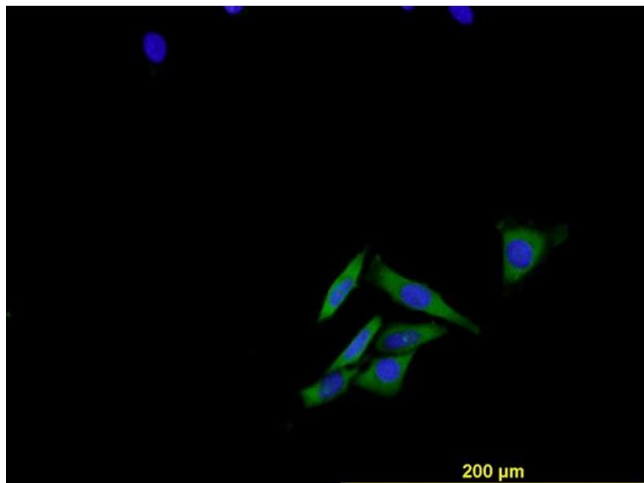
Target:	Endoglin (ENG)
Alternative Name:	ENG (ENG Products)
Gene ID:	2022

Application Details

Application Notes:	Optimal working dilution should be determined by the investigator.
Restrictions:	For Research Use only

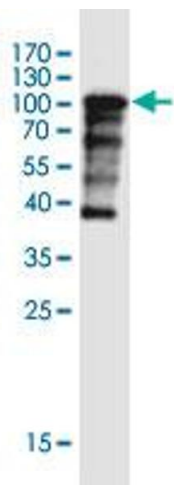
Handling

Buffer:	In 1x PBS, pH 7.4
Storage:	-20 °C
Storage Comment:	Store at -20°C or lower. Aliquot to avoid repeated freezing and thawing.



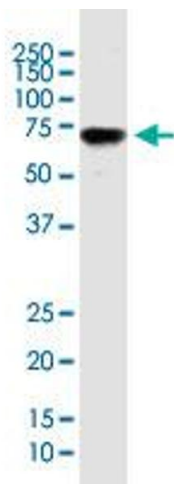
Immunofluorescence

Image 1. Immunofluorescence of monoclonal antibody to ENG on HeLa cell . [antibody concentration 10 ug/ml]



Western Blotting

Image 2. Western Blot detection against Immunogen (95.26 kDa) .



Western Blotting

Image 3. ENG monoclonal antibody (M26), clone 1E5. Western Blot analysis of ENG expression in human lung cancer.

Please check the [product details page](#) for more images. Overall 4 images are available for ABIN2752224.