



Datasheet for ABIN2752287

anti-KLF10/TIEG1 antibody (AA 1-469)



[Go to Product page](#)

1 Image

Overview

Quantity:	200 µL
Target:	KLF10/TIEG1 (KLF10)
Binding Specificity:	AA 1-469
Reactivity:	Human
Host:	Mouse
Clonality:	Monoclonal
Conjugate:	This KLF10/TIEG1 antibody is un-conjugated
Application:	Western Blotting (WB), ELISA

Product Details

Purpose:	Mouse monoclonal antibody raised against a full-length recombinant KLF10.
Immunogen:	KLF10 (AAH11538.1, 1 a.a. ~ 469 a.a) full-length recombinant protein with GST tag.
Sequence:	MEERMEMISE RPKESMYSWN KTAEKSDFEA VEALMSMSCS WKSDFKKYVE NRPVTPVSDL SEENLLPGT PDFHTIPAFC LTPPYSPSDF EPSQVSNLMA PAPSTVHFKS LSDTAKPHIA APFKKEEKSP VSAPKLPKAQ ATSVIRHTAD AQLCNHQTCP MKAASILNYQ NNSFRRRTHL NVEAARKNIP CAAVSPNRSK CERNTVADVD EKASAALYDF SVPSSSETVIC RSQPAPVSPQ QKSVLVSPA VSAGGVPPMP VICQMVPLPA NNPVTTVVP STPPSQPPAV CPPVVMGTQ VPKGAVMFVW PQPVVQSSKP PVPSPNGTRL SPIAPAGFS PSAAKVTPQI DSSRIRSHIC SHPGCGKTYF KSSHLKAHTR THTGEKPFSC SWKGCERRFA RSELSRHRR THTGEKKFAC PMCDRRFMRS DHLTKHARRH LSAKKLPNWQ MEVSKLNDIA LPPTPAPTQ
Clone:	S1

Product Details

Isotype: IgG1 kappa

Cross-Reactivity: Human

Target Details

Target: KLF10/TIEG1 (KLF10)

Alternative Name: KLF10 ([KLF10 Products](#))

Background: Full Gene Name: Kruppel-like factor 10
Synonyms: EGRA,TIEG,TIEG1

Gene ID: 7071

Pathways: [Stem Cell Maintenance](#)

Application Details

Application Notes: Optimal working dilution should be determined by the investigator.

Comment: Product Quality tested by: Antibody Reactive Against Recombinant Protein.

Restrictions: For Research Use only

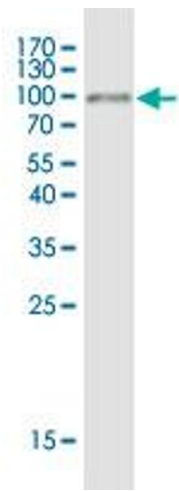
Handling

Format: Liquid

Buffer: In ascites fluid

Storage: -20 °C

Storage Comment: Store at -20°C or lower. Aliquot to avoid repeated freezing and thawing.



Western Blotting

Image 1. Western Blot detection against Immunogen (76.34 kDa) .