



[Go to Product page](#)

Datasheet for ABIN2752307
anti-LACTB2 antibody (AA 1-288)

4 Images

Overview

Quantity:	100 µg
Target:	LACTB2
Binding Specificity:	AA 1-288
Reactivity:	Human
Host:	Mouse
Clonality:	Monoclonal
Conjugate:	This LACTB2 antibody is un-conjugated
Application:	Western Blotting (WB), ELISA

Product Details

Purpose:	Mouse monoclonal antibody raised against a full-length recombinant LACTB2.
Immunogen:	LACTB2 (NP_057111.1, 1 a.a. ~ 288 a.a) full-length recombinant protein with GST tag. MW of the GST tag alone is 26 KDa.
Sequence:	MAAVLQRVER LSNRVVRLG CNPGPMTLQG TNTYLVGTGP RRILIDTGEP AIPEYISCLK QALTEFNIAI QEIVVTHWHR DHSGGIGDIC KSINNDTTYC IKKLPRNPQR EEIIGNGEQQ YVYLKGDGVI KTEGATLRVL YTPGHTDDHM ALLLEEENAI FSGDCILGEG TTVFEDLYDY MNSLKELLKI KADIIYPGHG PVIHNAEAKI QQYISHRNIR EQQILTLFRE NFEKSFTVME LVKIIYKNTP ENLHEMAKHN LLLHLKKLEK EGKIFSNTDP DKKWKAHL
Clone:	1H3
Isotype:	IgG2a
Cross-Reactivity:	Human

Product Details

Characteristics: Antibody Reactive Against Recombinant Protein.

Target Details

Target: LACTB2

Alternative Name: LACTB2 ([LACTB2 Products](#))

Background: Full Gene Name: lactamase, beta 2
Synonyms: CGI-83

Gene ID: 51110

NCBI Accession: [NM_016027](#)

Application Details

Application Notes: Optimal working dilution should be determined by the investigator.

Restrictions: For Research Use only

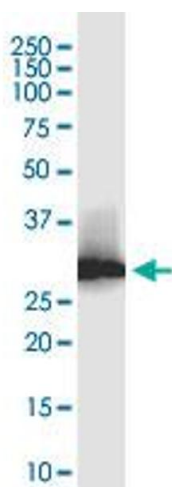
Handling

Buffer: In 1x PBS, pH 7.4

Storage: -20 °C

Storage Comment: Store at -20°C or lower. Aliquot to avoid repeated freezing and thawing.

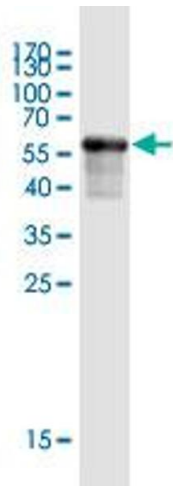
Images



Western Blotting

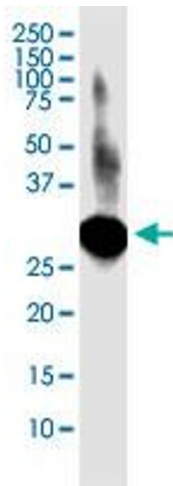
Image 1. LACTB2 monoclonal antibody (M02), clone 1H3.

Western Blot analysis of LACTB2 expression in SK-BR-3.



Western Blotting

Image 2. Western Blot detection against Immunogen (59.2 kDa).



Western Blotting

Image 3. LACTB2 monoclonal antibody (M02), clone 1H3. Western Blot analysis of LACTB2 expression in human kidney.

Please check the [product details page](#) for more images. Overall 4 images are available for ABIN2752307.