



[Go to Product page](#)

Datasheet for ABIN2752312  
**anti-LRRIQ1 antibody (AA 1-240)**

2 Images

Overview

Quantity:	100 µg
Target:	LRRIQ1
Binding Specificity:	AA 1-240
Reactivity:	Human
Host:	Mouse
Clonality:	Monoclonal
Conjugate:	This LRRIQ1 antibody is un-conjugated
Application:	ELISA, Western Blotting (WB)

Product Details

Purpose:	Mouse monoclonal antibody raised against a full-length recombinant LRRIQ1.
Immunogen:	LRRIQ1 (AAH05399.1, 1 a.a. ~ 240 a.a) full-length recombinant protein with GST tag. MW of the GST tag alone is 26 KDa.
Sequence:	MDDDDAKLKA EIEAELDKLS ISSLEKEDIE SDAKSETQSD DSDTDSVELP ESVLHCINII KNRSKAVEEL ILQDLEDILS CSYGAVSNNH MHLRTGLSTE YEESEQLIK ILSEIEKEEF MRSKTDGATP DVFPEPSPHD LPMDEHVLPD DADINFGYCE VEEKCRQSFE AWQEKQKELE DKEKQTLKAQ RDREEKQFQE EEEKRHCWMK QFKVEKKKLE NIQKVFCFCF SCIFKISSYL
Clone:	3H1
Isotype:	IgG1
Cross-Reactivity:	Human

## Product Details

---

Characteristics: Antibody Reactive Against Recombinant Protein.

## Target Details

---

Target: LRRIQ1

Alternative Name: LRRIQ1 ([LRRIQ1 Products](#))

Background: Full Gene Name: leucine-rich repeats and IQ motif containing 1  
Synonyms: FLJ12303

Gene ID: 84125

## Application Details

---

Application Notes: Optimal working dilution should be determined by the investigator.

Restrictions: For Research Use only

## Handling

---

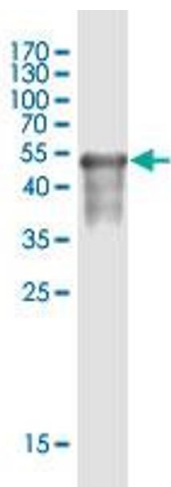
Buffer: In 1x PBS, pH 7.4

Storage: -20 °C

Storage Comment: Store at -20°C or lower. Aliquot to avoid repeated freezing and thawing.

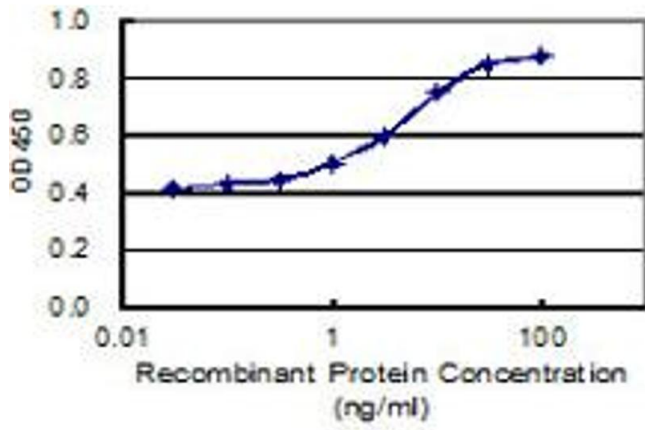
## Images

---



### Western Blotting

**Image 1.** Western Blot detection against Immunogen (54.4 kDa).



## ELISA

**Image 2.** Detection limit for recombinant GST tagged LRR1Q1 is 0.3 ng/ml as a capture antibody.