



[Go to Product page](#)

Datasheet for ABIN2752401
anti-PLA2G2A antibody (AA 1-144)

1 Image

Overview

Quantity:	100 µg
Target:	PLA2G2A
Binding Specificity:	AA 1-144
Reactivity:	Human
Host:	Mouse
Clonality:	Monoclonal
Conjugate:	This PLA2G2A antibody is un-conjugated
Application:	ELISA

Product Details

Purpose:	Mouse monoclonal antibody raised against a full-length recombinant PLA2G2A.
Immunogen:	PLA2G2A (AAH05919.1, 1 a.a. ~ 144 a.a) full-length recombinant protein with GST tag. MW of the GST tag alone is 26 KDa.
Sequence:	MKTLALLAVI MIFGLLQAHG NLVNFHRMIK LTTGKEAALS YGFYGCHCGV GGRGSPKDAT DRCCVTHDCC YKRLEKRGCG TKFLSYKFSN SGSRITCAKQ DSCRSQLCEC DKAAATCSAR NKTTYNKKYQ YYSNKHCRGS TPRC
Clone:	2E8
Isotype:	IgG1
Cross-Reactivity:	Human
Characteristics:	Antibody Reactive Against Recombinant Protein.

Target Details

Target:	PLA2G2A
Alternative Name:	PLA2G2A (PLA2G2A Products)
Background:	Full Gene Name: phospholipase A2, group IIA (platelets, synovial fluid) Synonyms: MOM1,PLA2,PLA2B,PLA2L,PLA2S,PLAS1,sPLA2
Gene ID:	5320
Pathways:	Stem Cell Maintenance , Inositol Metabolic Process

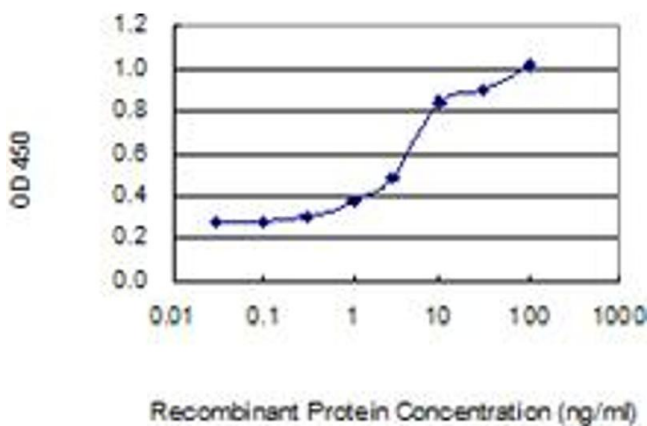
Application Details

Application Notes:	Optimal working dilution should be determined by the investigator.
Restrictions:	For Research Use only

Handling

Buffer:	In 1x PBS, pH 7.4
Storage:	-20 °C
Storage Comment:	Store at -20°C or lower. Aliquot to avoid repeated freezing and thawing.

Images



ELISA

Image 1. Detection limit for recombinant GST tagged PLA2G2A is 0.1 ng/ml as a capture antibody.