



[Go to Product page](#)

Datasheet for ABIN2752414
anti-SLC50A1 antibody (AA 1-167)

2 Images

Overview

Quantity:	50 µg
Target:	SLC50A1 (RAG1AP1)
Binding Specificity:	AA 1-167
Reactivity:	Human
Host:	Mouse
Clonality:	Polyclonal
Conjugate:	This SLC50A1 antibody is un-conjugated
Application:	Western Blotting (WB)

Product Details

Purpose:	Mouse polyclonal antibody raised against a full-length human RAG1AP1 protein.
Immunogen:	RAG1AP1 (AAH09621, 1 a.a. ~ 167 a.a) full-length human protein.
Sequence:	MEAGGFDSL IYGACVVFTL GMFSAGLSL RHMRMTRSVD NVQFLPFLT EVNNLGWLSY GALKGDGILI VWNTVGAALQ TLYILAYLHY CPRKAKVIQT KSTQCLSYPL TIATLLTSAS WCLYGFRLRD PYIMVSNFPG IVTSFIRFWL FWKYPQEQDR NYWLLQT
Cross-Reactivity:	Human
Characteristics:	Antibody reactive against mammalian transfected lysate.
Purification:	Purified

Target Details

Target:	SLC50A1 (RAG1AP1)
Alternative Name:	RAG1AP1 (RAG1AP1 Products)
Background:	Full Gene Name: recombination activating gene 1 activating protein 1 Synonyms: SCP,slv
Gene ID:	55974

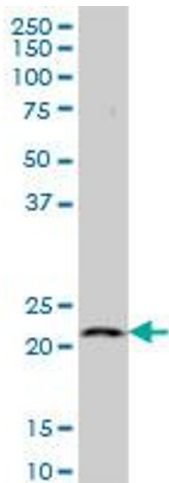
Application Details

Application Notes:	Optimal working dilution should be determined by the investigator.
Restrictions:	For Research Use only

Handling

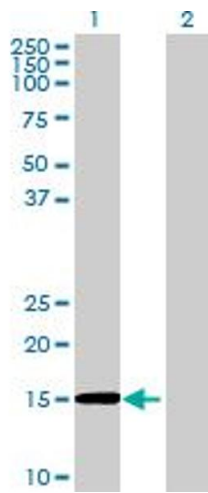
Buffer:	In 1x PBS, pH 7.4
Storage:	-20 °C
Storage Comment:	Store at -20°C or lower. Aliquot to avoid repeated freezing and thawing.

Images



Western Blotting

Image 1. RAG1AP1 MaxPab polyclonal antibody. Western Blot analysis of RAG1AP1 expression in human colon.



Western Blotting

Image 2. Western Blot analysis of RAG1AP1 expression in transfected 293T cell line (H00055974-T01) by RAG1AP1 MaxPab polyclonal antibody. Lane 1: RAG1AP1 transfected lysate(18.37 KDa). Lane 2: Non-transfected lysate.