



[Go to Product page](#)

Datasheet for ABIN2752434
anti-S100B antibody (AA 1-92)

3 Images

Overview

Quantity:	100 µg
Target:	S100B
Binding Specificity:	AA 1-92
Reactivity:	Human
Host:	Mouse
Clonality:	Monoclonal
Conjugate:	This S100B antibody is un-conjugated
Application:	Western Blotting (WB), Immunofluorescence (IF), ELISA

Product Details

Purpose:	Mouse monoclonal antibody raised against a full-length recombinant S100B.
Immunogen:	S100B (NP_006263.1, 1 a.a. ~ 92 a.a) full-length recombinant protein with GST tag. MW of the GST tag alone is 26 KDa.
Sequence:	MSELEKAMVA LIDVFHQYSG REGDKHKLKK SELKELINNE LSHFLEEIKE QEVVDKVMET LDNDGDGECDFQEFMAFVAM VTTACHEFFE HE
Clone:	2A10
Isotype:	IgG1
Cross-Reactivity:	Human
Characteristics:	Antibody Reactive Against Recombinant Protein.

Target Details

Target:	S100B
Alternative Name:	S100B (S100B Products)
Background:	Full Gene Name: S100 calcium binding protein B Synonyms: NEF,S100,S100beta
Gene ID:	6285
NCBI Accession:	NM_006272
Pathways:	Regulation of Muscle Cell Differentiation , Positive Regulation of Immune Effector Process , Toll-Like Receptors Cascades , Regulation of long-term Neuronal Synaptic Plasticity , S100 Proteins

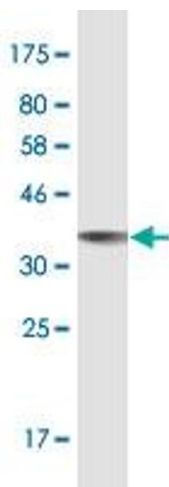
Application Details

Application Notes:	Optimal working dilution should be determined by the investigator.
Restrictions:	For Research Use only

Handling

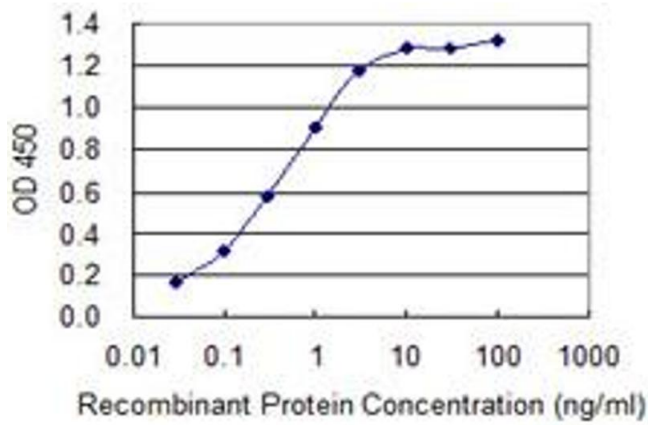
Buffer:	In 1x PBS, pH 7.4
Storage:	-20 °C
Storage Comment:	Store at -20°C or lower. Aliquot to avoid repeated freezing and thawing.

Images



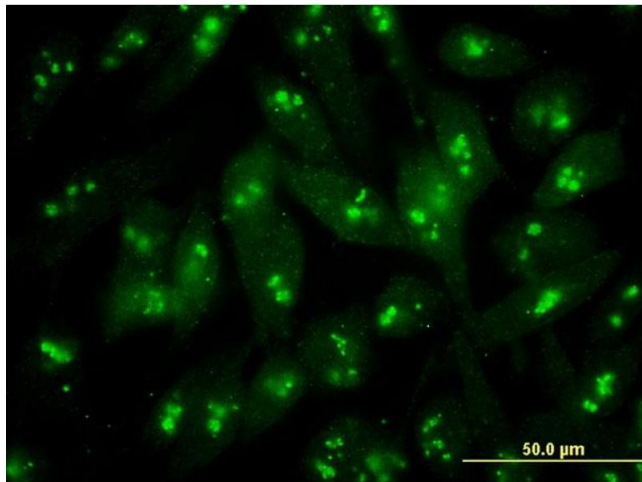
Western Blotting

Image 1. Western Blot detection against Immunogen (35.86 kDa).



ELISA

Image 2. Detection limit for recombinant GST tagged S100B is 0.03 ng/ml as a capture antibody.



Immunofluorescence

Image 3. Immunofluorescence of monoclonal antibody to S100B on HeLa cell . [antibody concentration 10 ug/ml]