

Datasheet for ABIN2752445
anti-SHCBP1 antibody (AA 1-672)



[Go to Product page](#)

3 Images

Overview

Quantity:	100 µg
Target:	SHCBP1
Binding Specificity:	AA 1-672
Reactivity:	Human
Host:	Mouse
Clonality:	Monoclonal
Application:	ELISA, Western Blotting (WB)

Product Details

Purpose:	Mouse monoclonal antibody raised against a full-length recombinant SHCBP1.
Immunogen:	SHCBP1 (NP_079021.2, 1 a.a. ~ 672 a.a) full-length recombinant protein with GST tag. MW of the GST tag alone is 26 KDa.
Sequence:	MADGSLTGGG LEAAAMAPER TGWAVEQELA SLEKGLFQDE DSCSDCSYRD KPGSSLQSFM PEGKTFPEI FQTNQLLFYE RFRAYQDYIL ADCKASEVQE FTAEFLEKVL EPSGWRAWWH TNVFKVLVEI TDVDFAAALKA VVRLAEPYLC DSQVSTFTME CMKELLDLKE HRLPLQELWV VFDDSGVFDQ TALAIEHVRV FYQNIWRSD EEEEEYDYF VRCVEPRLRL HYDILED RVP SGLIVDYHNL LSQCEESYRK FLNLRSSLSN CNSDSEQENI SMVEGLKLYS EMEQLKQKLK LIENPLLRVY FGYQKNSNIQ AKGVRSSGQK ITHVVSSTMM AGLLRSLTLD RLCQEPGEEE REIQFHSDPL SAINACFEGD TVIVCPGHYV VHGTFSIADS IELEGYGLPD DIVIEKRGKG DTFVDCTGAD IKISGIKVVQ HDAVEGILIV HRGKTTLENC VLQCETTGVV VRTSAEFLMK NSDLYGAKGA GIEIYPGSQC TLDNGIHHK KEGILIKDFL DEHYDIPKIS MVNNIIHNNE GYGVVLVKPT IFSDLQESAE DGTEENKALK IQTSGEPDVA ERVDLEELIE CATGKMELCA

Product Details

RTDPSEQVEG NCEIVNELIA ASTQKKGQIKK KRLSELGITQ ADDNLMSQEM FVGIVGNQFK
WNGKGSFGTF LF

Clone: 1G8

Isotype: IgG2a kappa

Cross-Reactivity: Human

Target Details

Target: SHCBP1

Alternative Name: SHCBP1 ([SHCBP1 Products](#))

Background: Full Gene Name: SHC SH2-domain binding protein 1
Synonyms: FLJ22009,MGC26900,PAL

Gene ID: 79801

NCBI Accession: [NP_079021](#), [NM_024745](#)

Application Details

Application Notes: Optimal working dilution should be determined by the investigator.

Comment: Product Quality tested by: Antibody Reactive Against Recombinant Protein.

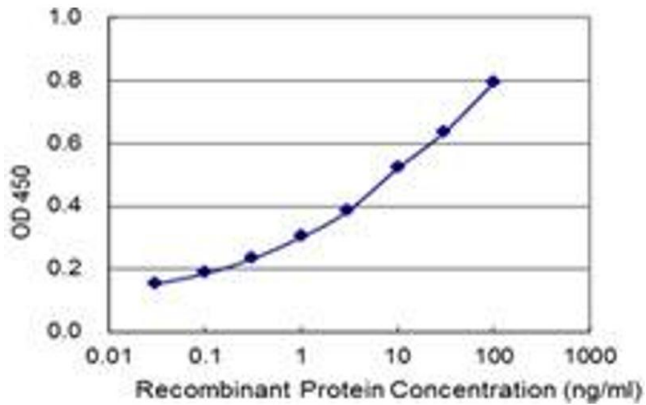
Restrictions: For Research Use only

Handling

Buffer: In 1x PBS, pH 7.4

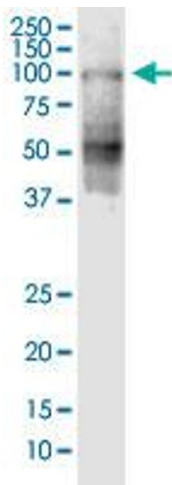
Storage: -20 °C

Storage Comment: Store at -20°C or lower. Aliquot to avoid repeated freezing and thawing.



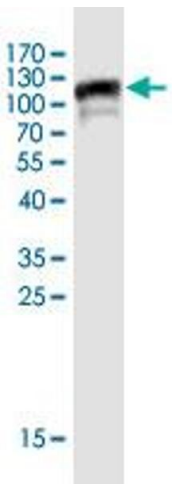
ELISA

Image 1. Detection limit for recombinant GST tagged SHCBP1 is 0.03 ng/ml as a capture antibody.



Western Blotting

Image 2. SHCBP1 monoclonal antibody (M04), clone 1G8. Western Blot analysis of SHCBP1 expression in K-562.



Western Blotting

Image 3. Western Blot detection against Immunogen (102 kDa).