

Datasheet for ABIN2752454
anti-SPATC1 antibody (AA 1-500)



[Go to Product page](#)

2 Images

Overview

Quantity:	100 µg
Target:	SPATC1
Binding Specificity:	AA 1-500
Reactivity:	Human
Host:	Mouse
Clonality:	Monoclonal
Conjugate:	This SPATC1 antibody is un-conjugated
Application:	Western Blotting (WB), ELISA

Product Details

Purpose:	Mouse monoclonal antibody raised against a full-length recombinant SPATC1.
Immunogen:	SPATC1 (NP_940974.1, 1 a.a. ~ 500 a.a) full-length recombinant protein with GST tag. MW of the GST tag alone is 26 KDa.
Sequence:	MALAPLAEML TSLQPSATPG SLMSPLTGTL STLLSGPAPT SQSSPLTSFL TSPIAGPLTG TLASSLGLPS TGTLTPSSLV AGPVAMSQSS PLIAPVMGTV AVSLSSPLLS STATPPGVSQ NLLANPMSNL VLPEAPRLRL AEPLRGGPTG PQSPACVVPT ATTKVPLSTE PPQSTQDPEP LSMAFAGAPL QTSTPIGAMG TPAPKTAFSF NTSDTQAQPS AAQEQVVPAS VPTSPTTSPT VTVLASAPAL APQVATSYTP SSTTHIAQGA PHPPSRMHNS PTQNLVPVPHC PPHNAHSPPR TSSSPASVND SRGPRTTEPS TKSMMEVERK LAHRKTSKFP ENPRESKQLA WERLVGEIAF QLDRRILSSI FPERVRLYGF TASNPEKII QASLNPSDHK LDEKLCQRLT QRYVSVMNRL QSLGYNGRVH PALTEQLVNA YGILRERPEL AASEGGPYTV DFLQRVVVET VHPGMLADAL LLLSCLSQLA HDDGKPMFIW

Product Details

Clone:	1G4
Isotype:	IgG2b
Cross-Reactivity:	Human
Characteristics:	Antibody Reactive Against Recombinant Protein.

Target Details

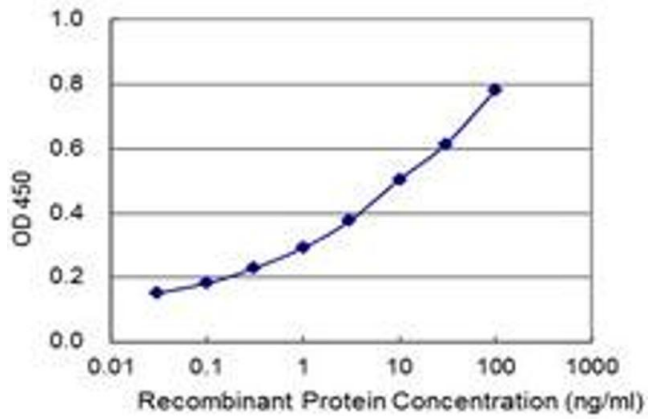
Target:	SPATC1
Alternative Name:	SPATC1 (SPATC1 Products)
Background:	Full Gene Name: spermatogenesis and centriole associated 1 Synonyms: MGC61633, SPATA15, SPERLIOLIN
Gene ID:	375686
NCBI Accession:	NM_198572

Application Details

Application Notes:	Optimal working dilution should be determined by the investigator.
Restrictions:	For Research Use only

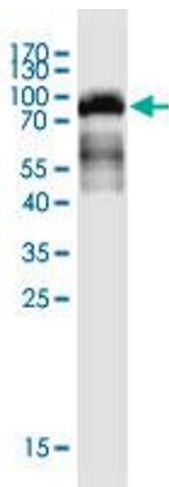
Handling

Buffer:	In 1x PBS, pH 7.4
Storage:	-20 °C
Storage Comment:	Store at -20°C or lower. Aliquot to avoid repeated freezing and thawing.



ELISA

Image 1. Detection limit for recombinant GST tagged SPATC1 is 0.03 ng/ml as a capture antibody.



Western Blotting

Image 2. Western Blot detection against Immunogen (78.9 kDa).