



[Go to Product page](#)

Datasheet for ABIN2752464  
**anti-TMEFF2 antibody (AA 1-374)**

1 Image

Overview

Quantity:	50 µg
Target:	TMEFF2
Binding Specificity:	AA 1-374
Reactivity:	Human
Host:	Mouse
Clonality:	Polyclonal
Conjugate:	This TMEFF2 antibody is un-conjugated
Application:	Western Blotting (WB)

Product Details

Purpose:	Mouse polyclonal antibody raised against a full-length human TMEFF2 protein.
Immunogen:	TMEFF2 (NP_057276.2, 1 a.a. ~ 374 a.a) full-length human protein.
Sequence:	MVLWESPRQC SSWTLCEGFC WLLLLPVMML IVARPVKLAA FPTSLSDCQT PTGWNCSGYD DRENDLFLCD TNTCKFDGEC LRIGDTVTCV CQFKCNNDYV PVCGSNGESY QNECYLRQAA CKQQSEILVV SEGSCATDAG SGSGDGVHEG SGETSQKETS TCDICQFGAE CDEDAEDVWC VCNIDCSQTN FNPLCASDGK SYDNACQIKE ASCQKQEKIE VMSLGRCDQN TTTTTSKEDG HYARTDYAEN ANKLEESARE HHIPCPEHYN GFCMHGKCEH SINMQEPSCR CDAGYTGQHC EKKDYSVLVY VPGPVRVQYV LIAAVIGTIQ IAVICVVVLC ITRKCPRSNR IHRQKQNTGH YSSDNTTRAS TRLI
Cross-Reactivity:	Human
Characteristics:	Antibody reactive against mammalian transfected lysate.

## Product Details

Purification: Purified

## Target Details

Target: TMEFF2

Alternative Name: TMEFF2 ([TMEFF2 Products](#))

Background: Full Gene Name: transmembrane protein with EGF-like and two follistatin-like domains 2  
Synonyms: HPP1, TENB2, TPEF, TR

Gene ID: 23671

NCBI Accession: [NM\\_016192](#)

## Application Details

Application Notes: Optimal working dilution should be determined by the investigator.

Restrictions: For Research Use only

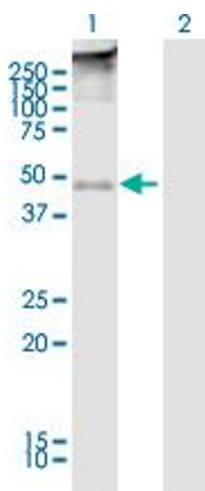
## Handling

Buffer: In 1x PBS, pH 7.4

Storage: -20 °C

Storage Comment: Store at -20°C or lower. Aliquot to avoid repeated freezing and thawing.

## Images



### Western Blotting

**Image 1.** Western Blot analysis of TMEFF2 expression in transfected 293T cell line ( H00023671-T01 ) by TMEFF2 MaxPab polyclonal antibody. Lane 1: TMEFF2 transfected lysate(41.14 kDa). Lane 2: Non-transfected lysate.