

Datasheet for ABIN2752639
anti-WDR27 antibody (AA 1-266)



[Go to Product page](#)

2 Images

Overview

Quantity:	100 µg
Target:	WDR27
Binding Specificity:	AA 1-266
Reactivity:	Human
Host:	Mouse
Clonality:	Monoclonal
Conjugate:	This WDR27 antibody is un-conjugated
Application:	ELISA, Western Blotting (WB)

Product Details

Purpose:	Mouse monoclonal antibody raised against a full-length recombinant WDR27.
Immunogen:	WDR27 (AAH40606.1, 1 a.a. ~ 266 a.a) full-length recombinant protein with GST tag. MW of the GST tag alone is 26 KDa.
Sequence:	MENPQDIFSS NGGCLSDIVI EKYLVESKES VSHVQLACSM QDCAFLDGT ELCIWNTKDP SHQLLILRGH HQPITAMAFG NKVNPLLIC ASLDYVIMWN LDECREKVLQ GLVPRGTVMG SLLGKVLCLQ LSPDDHVAV CAGNKIFMLD IEQRFSVTYI ERPDVNNRHK VPPPTFLHTF SQAQAVRAEL QGHLGPVTAV EFCPWAGTL ISASEDRGFK VWDHCTGSLI YSSSVLSAYP LLSLFIDAES RQLVTGVLTA SFGSSV
Clone:	3C5
Isotype:	IgG1
Cross-Reactivity:	Human

Product Details

Characteristics: Antibody Reactive Against Recombinant Protein.

Target Details

Target: WDR27

Alternative Name: WDR27 ([WDR27 Products](#))

Background: Full Gene Name: WD repeat domain 27
Synonyms: MGC43690

Gene ID: 253769

Application Details

Application Notes: Optimal working dilution should be determined by the investigator.

Restrictions: For Research Use only

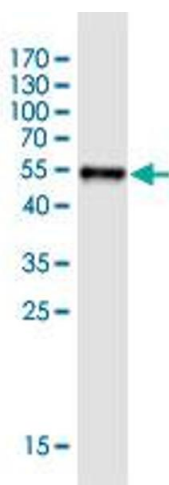
Handling

Buffer: In 1x PBS, pH 7.4

Storage: -20 °C

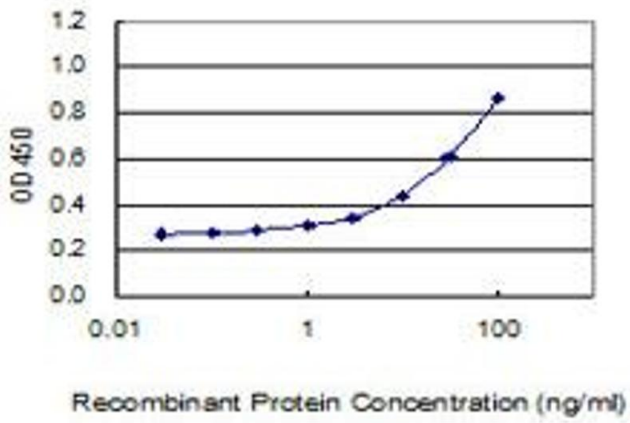
Storage Comment: Store at -20°C or lower. Aliquot to avoid repeated freezing and thawing.

Images



Western Blotting

Image 1. Western Blot detection against Immunogen (55.6 kDa).



ELISA

Image 2. Detection limit for recombinant GST tagged WDR27 is 0.3 ng/ml as a capture antibody.