

Datasheet for ABIN2752642
anti-ZC3HAV1L antibody (AA 1-300)



[Go to Product page](#)

3 Images

Overview

| | |
|----------------------|-----------------------------------------|
| Quantity: | 100 µg |
| Target: | ZC3HAV1L |
| Binding Specificity: | AA 1-300 |
| Reactivity: | Human |
| Host: | Mouse |
| Clonality: | Monoclonal |
| Conjugate: | This ZC3HAV1L antibody is un-conjugated |
| Application: | Western Blotting (WB), ELISA |

Product Details

| | |
|-------------------|--------------------------------------------------------------------------------------------------------------------------------------------------------------------------------------------------------------------------------------------------------------------------------------------------------------------------------------------------------|
| Purpose: | Mouse monoclonal antibody raised against a full-length recombinant ZC3HAV1L. |
| Immunogen: | ZC3HAV1L (NP_542391.1, 1 a.a. ~ 300 a.a) full-length recombinant protein with GST tag. MW of the GST tag alone is 26 KDa. |
| Sequence: | MAEPTVCSFL TKVLCAHGGR MFLKDLRGHV ELSEARLRDV LQRAGPERFL LQEVETQEGL GDAAEAAAAG AVGGGGTSAW RVVAVSSVRL CARYQRGECQ ACDQLHFCRR HMLGKCPNRD CWSTCTLSHD IHTPVNMQVL KSHGLFGLNE NQLRILLLQN DPCLLPEVCL LYNKGEALYG YCNLKDCKCNK FHVCKSFVKG ECKLQTCKRS HQLIHAASLK LLQDQGLNIP SVVNFQIIST YKHIKHLKML ENTDNSSPST EHSQGLEKQG VHAAGAAEAG PLASVPAQSA KKPCPVSCEK |
| Clone: | 2D12 |
| Isotype: | IgG1 |
| Cross-Reactivity: | Human |

Product Details

Characteristics: Antibody Reactive Against Recombinant Protein.

Target Details

Target: ZC3HAV1L

Alternative Name: ZC3HAV1L ([ZC3HAV1L Products](#))

Background: Full Gene Name: zinc finger CCCH-type, antiviral 1-like
Synonyms: C7orf39,MGC14289

Gene ID: 92092

NCBI Accession: [NM_080660](#)

Application Details

Application Notes: Optimal working dilution should be determined by the investigator.

Restrictions: For Research Use only

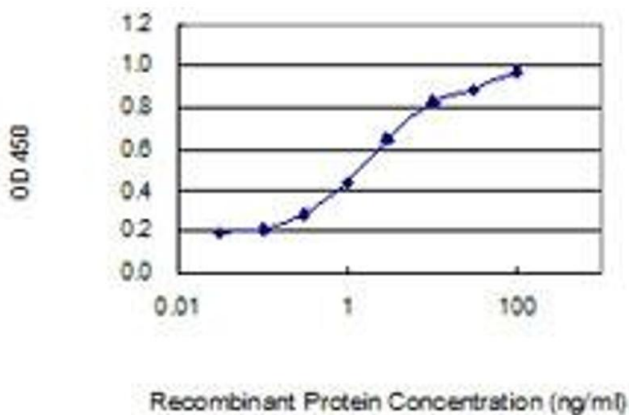
Handling

Buffer: In 1x PBS, pH 7.4

Storage: -20 °C

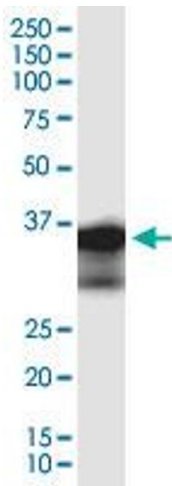
Storage Comment: Store at -20°C or lower. Aliquot to avoid repeated freezing and thawing.

Images



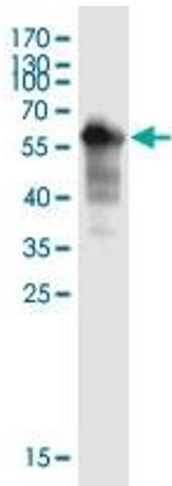
ELISA

Image 1. Detection limit for recombinant GST tagged ZC3HAV1L is 0.03 ng/ml as a capture antibody.



Western Blotting

Image 2. ZC3HAV1L monoclonal antibody (M02), clone 2D12. Western Blot analysis of ZC3HAV1L expression in human spleen.



Western Blotting

Image 3. Western Blot detection against Immunogen (59.3 kDa).