

Datasheet for ABIN2752724
ATP6V0A1 Protein (GST tag)



[Go to Product page](#)

1 Image

Overview

Quantity:	2 µg
Target:	ATP6V0A1
Origin:	Human
Source:	Wheat germ
Protein Type:	Recombinant
Purification tag / Conjugate:	This ATP6V0A1 protein is labelled with GST tag.
Application:	ELISA, Western Blotting (WB), Antibody Array (AA), Affinity Purification (AP)

Product Details

Purpose:	ATP6V0A1 (Human) Recombinant Protein (P01)
Sequence:	MGELFRSEEM TLAQLFLQSE AAYCCVSELG ELGKVQFRDL NPDVNVFQRK FVNEVRRCEE MDRKLRFVEK EIRKANIPIM DTGENPEVPF PRDMIDLEAN FEKIENELKE INTNQEALKR NFLELTELKF ILRKTQFFD EMADPDLEE SSSLLEPSEM GRGTPRLRGF VAGVINRERI PTFERMLWRV CRGNVFLRQA EIENPLEDPV TGDYVHKS VF IIFFQGDQLK NRVKKICEGF RASLYPCPET PQRKEMASG VNTRIDDLQM VLNQTEDHRQ RVLQAAAKNI RVWFIKVRKM KAIYHTLNLC NIDVTQKCLI AEVWCPVTDL DSIQFALRRG TEHSGSTVPS ILNRMQTNQT PPTYNKTNKF TYGFQNI VDA YGIGTYREIN PAPYTIITFP FLFAVMFGDF GHGILMTLFA VWMVLRESRI LSQKNENEMF STVFSGRYII LLGMVFSMYT GLIYNDCFSK SLNIFGSSWS VRPMFTYNWT EETLRGNPVL QLNPALPGVF GGPYPFGIDP IWNIATNKLT FLNSFKMKMS VILGIIHMLF GVSLSLFNHI YFKKPLNIYF GFPEIIFMT SLFGYLVILI FYKWTAYDAH TSENAPSLLI HFINMFLFSY PESGYSM LYS GQKGIQCFLV VALLCVPWM LLFKPLVLRR QYLRRKHLGT LNFGGIRVGN GPTEEDAEII QHDQLSTHSE DADEFDFGDT MVHQAIHTIE YCLGCISNTA

Product Details

SYLRLWALSL AHAQLSEVLW TMVIHIGLSV KSLAGGLVLF FFFTA FATLT VAILLIMEGL
SAFLHALRLH WVEFQNKFY S GTGFKFLPFS FEHIREGKFE E

Characteristics: Human ATP6V0A1 full-length ORF (NP_005168.2, 1 a.a. - 831 a.a.) recombinant protein with GST-tag at N-terminal.

Purification: in vitro wheat germ expression system

Target Details

Target: ATP6V0A1

Alternative Name: ATP6V0A1 ([ATP6V0A1 Products](#))

Background: Gene: ATPase, H⁺ transporting, lysosomal V0 subunit a1
Synonyms: ATP6N1, ATP6N1A, DKFZp781J1951, Stv1, VPP1, Vph1, a1

Gene ID: 535

NCBI Accession: [NM_005177](#)

Pathways: [Transition Metal Ion Homeostasis](#), [Proton Transport](#)

Application Details

Application Notes: Optimal working dilution should be determined by the investigator.

Restrictions: For Research Use only

Handling

Buffer: 50 mM Tris-HCl, 10 mM reduced Glutathione, pH =8.0 in the elution buffer.

Handling Advice: Aliquot to avoid repeated freezing and thawing.

Storage: -80 °C

Storage Comment: Best use within three months from the date of receipt of this protein.

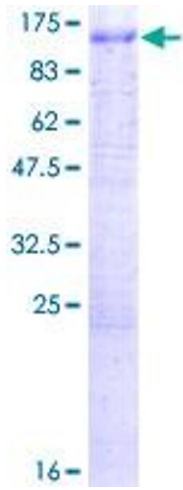


Image 1.