

Datasheet for ABIN2752747

Chemokine (C-C Motif) Ligand 4-Like 2 (CCL4L2) (AA 28-92) protein (GST tag)



[Go to Product page](#)

1 Image

Overview

Quantity:	10 µg
Target:	Chemokine (C-C Motif) Ligand 4-Like 2 (CCL4L2)
Protein Characteristics:	AA 28-92
Origin:	Human
Source:	Wheat germ
Protein Type:	Recombinant
Purification tag / Conjugate:	GST tag
Application:	ELISA, Western Blotting (WB), Antibody Array (AA), Affinity Purification (AP)

Product Details

Purpose:	CCL4L2 (Human) Recombinant Protein (Q01)
Sequence:	SDPPTACCFS YTARKLPRNF VVDYYETSSL CSQPAWVFQT KRGKQVCADP SESWWQEYVY DLELN
Characteristics:	Human CCL4L2 partial ORF (NP_996890.1, 28 a.a. - 92 a.a.) recombinant protein with GST tag at N-terminal.
Purification:	in vitro wheat germ expression system

Target Details

Target:	Chemokine (C-C Motif) Ligand 4-Like 2 (CCL4L2)
Alternative Name:	CCL4L2 (CCL4L2 Products)

Target Details

Background:	Full Gene Name: chemokine (C-C motif) ligand 4-like 2 Synonyms: AT744.2,CCL4L,SCYA4L
Gene ID:	388372
NCBI Accession:	NM_207007

Application Details

Application Notes:	Optimal working dilution should be determined by the investigator.
Comment:	Preparation method: in vitro, wheat germ expression system Product Quality tested by: 12.5% SDS-PAGE Stained with Coomassie Blue
Restrictions:	For Research Use only

Handling

Buffer:	50 mM Tris-HCl, 10 mM reduced Glutathione, pH =8.0 in the elution buffer.
Handling Advice:	Aliquot to avoid repeated freezing and thawing.
Storage:	-80 °C
Storage Comment:	Best use within three months from the date of receipt of this protein.

Images

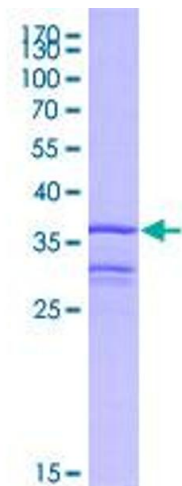


Image 1.