

Datasheet for ABIN2752779

**FBLN4 Protein (AA 1-229) (GST tag)**[Go to Product page](#)**1** Image

## Overview

Quantity:	10 µg
Target:	FBLN4
Protein Characteristics:	AA 1-229
Origin:	Human
Source:	Wheat germ
Protein Type:	Recombinant
Purification tag / Conjugate:	This FBLN4 protein is labelled with GST tag.
Application:	Western Blotting (WB), ELISA, Antibody Array (AA), Affinity Purification (AP)

## Product Details

Purpose:	EFEMP2 (Human) Recombinant Protein (P01)
Sequence:	MGAPCEQRCF NSYGTFLCRC HQGYELHRDG FSCSDIDECS YSSYLCQYRC VNEPGRFSCH CPQGYQLLAT RLCQDIDECE SGAHCQSEAE TCVNFHGGYR CVDNRCVEP YIQVSENRC CPASNPLCRE QPSSIVHRYM TITSERSVPA DVFQIQATSV YPGAYNAFQI RAGPRPAGDG PPGVRAGPGD GHHEFPHELP GQLCTEAHRL CRGLHLLRSR REPPSLHLP
Characteristics:	Human EFEMP2 full-length ORF (no protein_acc, 1 a.a. - 229 a.a.) recombinant protein with GST tag at N-terminal.
Purification:	in vitro wheat germ expression system

## Target Details

Target:	FBLN4
---------	-------

## Target Details

Alternative Name:	EFEMP2 ( <a href="#">FBLN4 Products</a> )
Background:	<p>Synonyms: FBLN4,MBP1,UPH1</p> <p>Gene Description: EGF-containing fibulin-like extracellular matrix protein 2</p> <p>Gene Name: EFEMP2</p> <p>Gene Summary: A large number of extracellular matrix proteins have been found to contain variations of the epidermal growth factor (EGF) domain and have been implicated in functions as diverse as blood coagulation, activation of complement and determination of cell fate during development. The protein encoded by this gene contains four EGF2 domains and six calcium-binding EGF2 domains. This gene is necessary for elastic fiber formation and connective tissue development. Defects in this gene are cause of an autosomal recessive cutis laxa syndrome.</p> <p>GenBank: AK098186.1</p>
Molecular Weight:	52 kDa (theoretical)
Gene ID:	30008

## Application Details

Application Notes:	Optimal working dilution should be determined by the investigator.
Restrictions:	For Research Use only

## Handling

Buffer:	50 mM Tris-HCl, 10 mM reduced Glutathione, pH =8.0 in the elution buffer.
Handling Advice:	Aliquot to avoid repeated freezing and thawing.
Storage:	-80 °C
Storage Comment:	Best use within three months from the date of receipt of this protein.

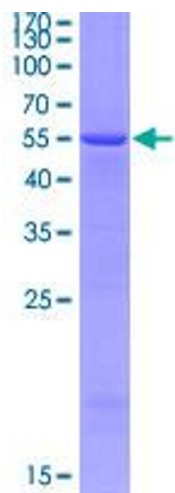


Image 1.