

## Datasheet for ABIN2752807 HDGF Protein (GST tag)



[Go to Product page](#)

### 1 Image

#### Overview

Quantity:	10 µg
Target:	HDGF
Origin:	Human
Source:	Wheat germ
Protein Type:	Recombinant
Purification tag / Conjugate:	This HDGF protein is labelled with GST tag.
Application:	Western Blotting (WB), ELISA, Affinity Purification (AP), Antibody Array (AA)

#### Product Details

Purpose:	HDGF (Human) Recombinant Protein (P01)
Sequence:	MSRSNRQKEY KCGDLVFAKM KGYPHWPARI DEMPEAAVKS TANKYQVFFF GTHETAFLGP KDLFPYEESK EKFGKPNKRK GFSEGLWEIE NNPTVKASGY QSSQKKSCVE EPEPEPEAAE GDGDKKGNAE GSSDEEGKLV IDEPAKEKNE KGALKRRAGD LLEDSPKRPK EAENPEGEEK EAATLEVERP LPMEVEKNST PSEPGSGRGP PQEEEEEEDE EEEATKEDAE APGIRDHESL
Characteristics:	Human HDGF full-length ORF ( NP_004485.1, 1 a.a. - 240 a.a.) recombinant protein with GST-tag at N-terminal.
Purification:	in vitro wheat germ expression system

#### Target Details

Target:	HDGF
Alternative Name:	HDGF ( <a href="#">HDGF Products</a> )

## Target Details

Background:	Gene: hepatoma-derived growth factor (high-mobility group protein 1-like) Synonyms: DKFZp686J1764, FLJ96580, HMG1L2
Gene ID:	3068
NCBI Accession:	<a href="#">NM_004494</a>
Pathways:	<a href="#">ER-Nucleus Signaling</a>

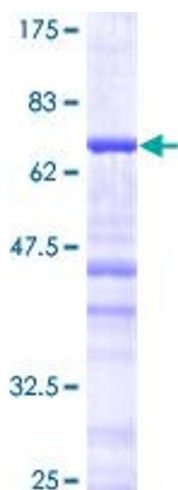
## Application Details

Application Notes:	Optimal working dilution should be determined by the investigator.
Restrictions:	For Research Use only

## Handling

Buffer:	50 mM Tris-HCl, 10 mM reduced Glutathione, pH =8.0 in the elution buffer.
Handling Advice:	Aliquot to avoid repeated freezing and thawing.
Storage:	-80 °C
Storage Comment:	Best use within three months from the date of receipt of this protein.

## Images



**Image 1.**